



ធនាគារជាតិ នៃ កម្ពុជា
NATIONAL BANK OF CAMBODIA

ព្រឹត្តិបត្រស្ថិតិសេដ្ឋកិច្ច និងរូបិយវត្ថុ **Economic and Monetary Statistics Bulletin**

ខែធ្នូ ឆ្នាំ២០២៣
DECEMBER 2023



លេខ៣៦២ – ឆ្នាំទី៣១

SERIES No. 362- 31TH YEAR

Contents

Page

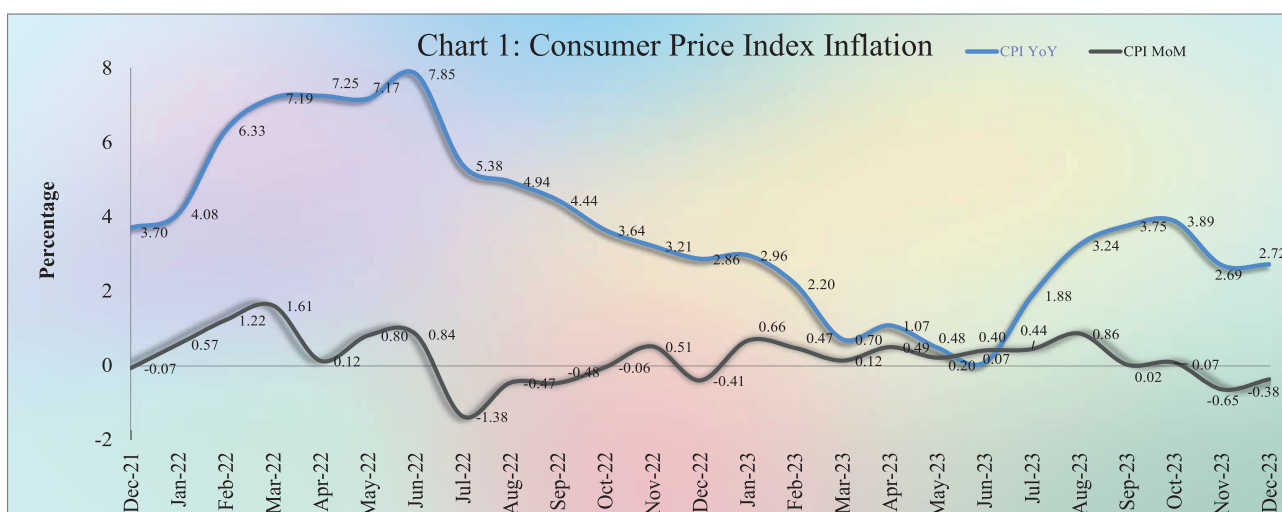
- Introduction.....	1
- Exchange Rate.....	1
- Money Supply.....	1
- Net Domestic Assets of the Depository Corporations.....	2
- Net Foreign Assets of the Depository Corporations.....	2
- Other Depository Corporations Survey.....	3
- Other Financial Corporations Survey.....	3
- Interest Rates on Loans and Deposits.....	3
- Foreign Tourist Arrivals.....	4
- International Trade in Goods.....	4
Table 1 : Consumer Price Index and Inflation Rate.....	6
Table 2 : Consumer Items Showing Price Decreased in December 2023.....	7
Table 3 : Gross Domestic Product.....	8
Chart 1 : GDP by Economic Activity (At Constant 2000 Prices).....	8
Chart 2 : GDP by Economic Activity (At Current Prices).....	8
Table 4 : Residential Property Price Index.....	9
Chart 3 : RPPI Month on Month Change.....	9
Chart 4 : RPPI Year on Year Change.....	9
Table 5 : Approved Investment Projects by Sectors.....	10
Chart 5 : Investment Fixed Assets by Sectors.....	10
Chart 6 : Numbers of Investment Projects by Sectors.....	10
Table 6 : Approved Investment Projects by Major Countries.....	11
Table 7 : Daily Exchange Rate in December 2023 (KHR/USD).....	12
Table 8 : Monthly Exchange Rate (KHR/USD, End-Period).....	13
Chart 7 : Trend of Monthly Exchange Rate.....	13
Table 9 : The Value of KHR Against Other Currencies (Official Buying Rates, End-Period).....	14
Table 10: Deposit Money Bank's Interest Rates on Deposits and Loans in KHR.....	15
Table 11: Central Bank Survey.....	16
Table 12: Other Depository Corporations Survey.....	17
Table 13: Depository Corporations Survey.....	18
Table 14: Other Financial Corporations Survey.....	19
Table 15: Financial Corporations Survey.....	20
Chart 8 : Financial Corporations Survey.....	21
Chart 9 : Monetary Aggregates Components.....	21
Table 16: Credit Granted by Deposit Money Banks Classified by Industry.....	22
Chart 10: Credit Granted by Deposit Money Banks Classified by Industry.....	22
Table 17: Monthly Change of Credit Granted by Deposit Money Banks Classified by Industry.....	23
Table 18: Deposits with Deposit Money Banks.....	24
Chart 11: Deposits with Deposit Money Banks Classified by Currency, as of December 2023 (% of Total Deposits).....	24
Table 19: Monthly Change of Deposits with Deposit Money Banks.....	25
Chart 12: Deposits in KHR Classified by Type, as of December 2023 (% of Total KHR Deposits).....	26
Chart 13: Deposits in Foreign Currency Classified by Type, as of December 2023 (% of Total FCD).....	26
Table 20: Credit Granted by Micro-Finance Institutions and Non-Government Organizations.....	27
Table 21: KHR-Denominated Checks Clearing Through Clearing House.....	28
Table 22: USD-Denominated Checks Clearing Through Clearing House.....	29
Table 23: Visitor Arrivals in Cambodia.....	30
Table 24: Cambodia's Imports and Exports.....	31
Table 25: The Banking System in Cambodia.....	32-33

Introduction

Headline consumer price inflation in December 2023 continued to decline to the negative level over the previous month, and the Khmer riel (KHR) appreciated against US dollar. During this period, financial intermediary of the banking sector, reflected by residents' deposits and credit to private sector, continued to increase. In the meantime, international trade in goods showed a deficit.

Consumer Price Index

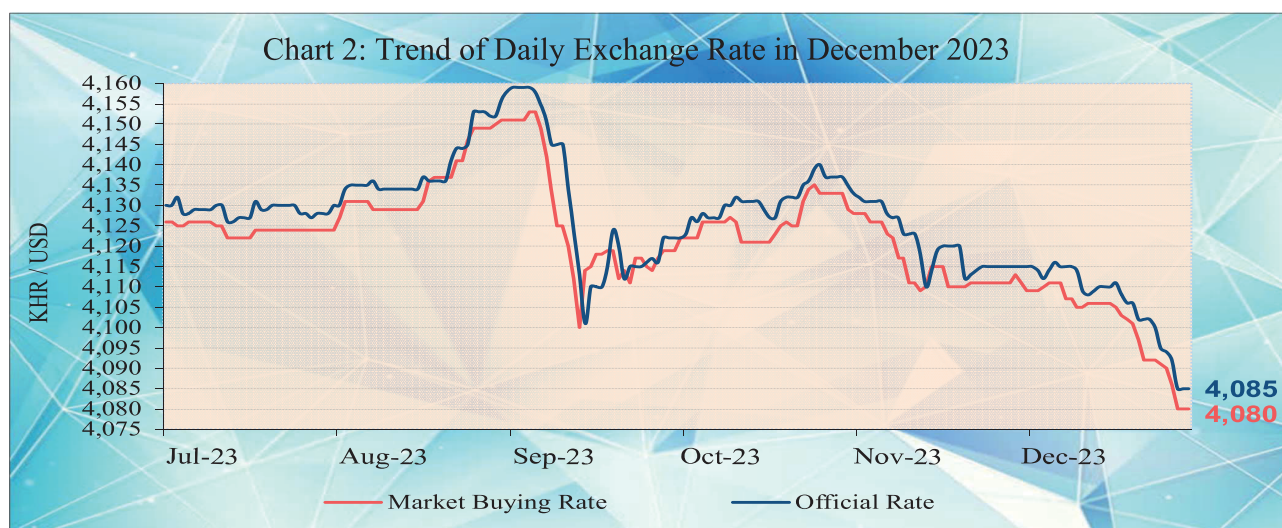
The consumer price inflation in Phnom Penh (month-on-month) continued to decrease to the negative level of -0.38% in December 2023 from -0.65% in November, in which seven out of twelve group indexes decreased, four group indexes increased, and the another group remained unchanged.



During the same period, the year-on-year percentage change of the CPI for all items remained to 2.7% in December 2023 (same rate as November), which was mainly due to the lower hike in food price whereas oil price increased.

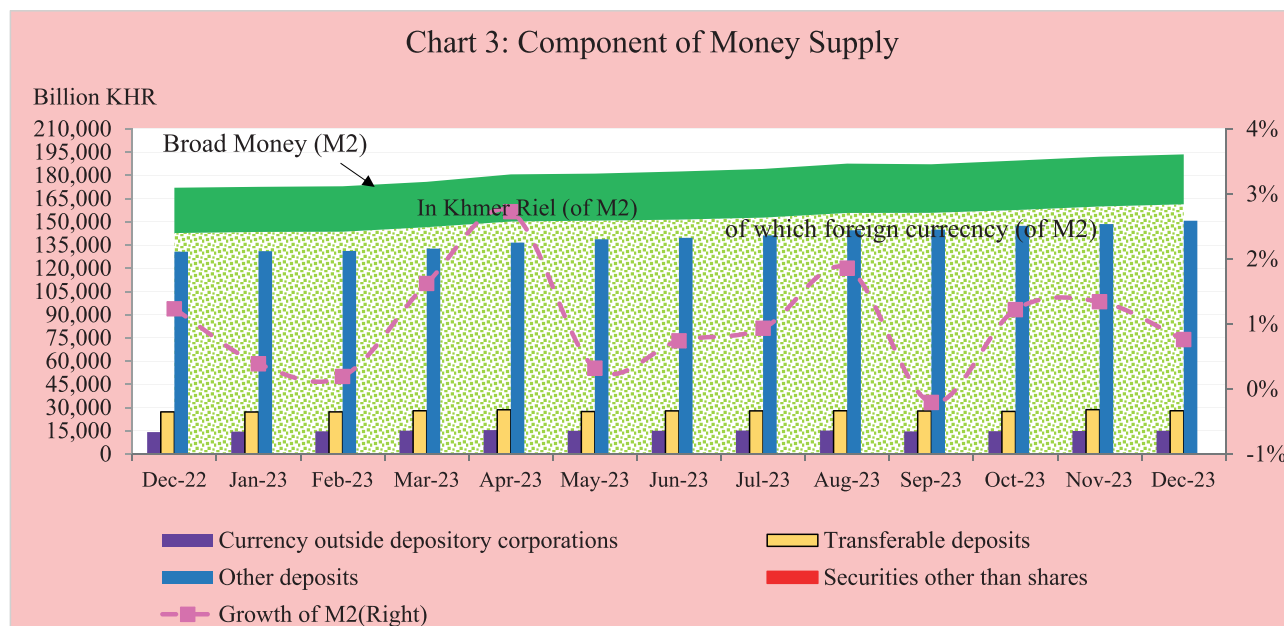
Exchange Rate

The exchange rate (market buying rate) was KHR 4,080 per USD in December 2023, appreciated by 0.80% over November.



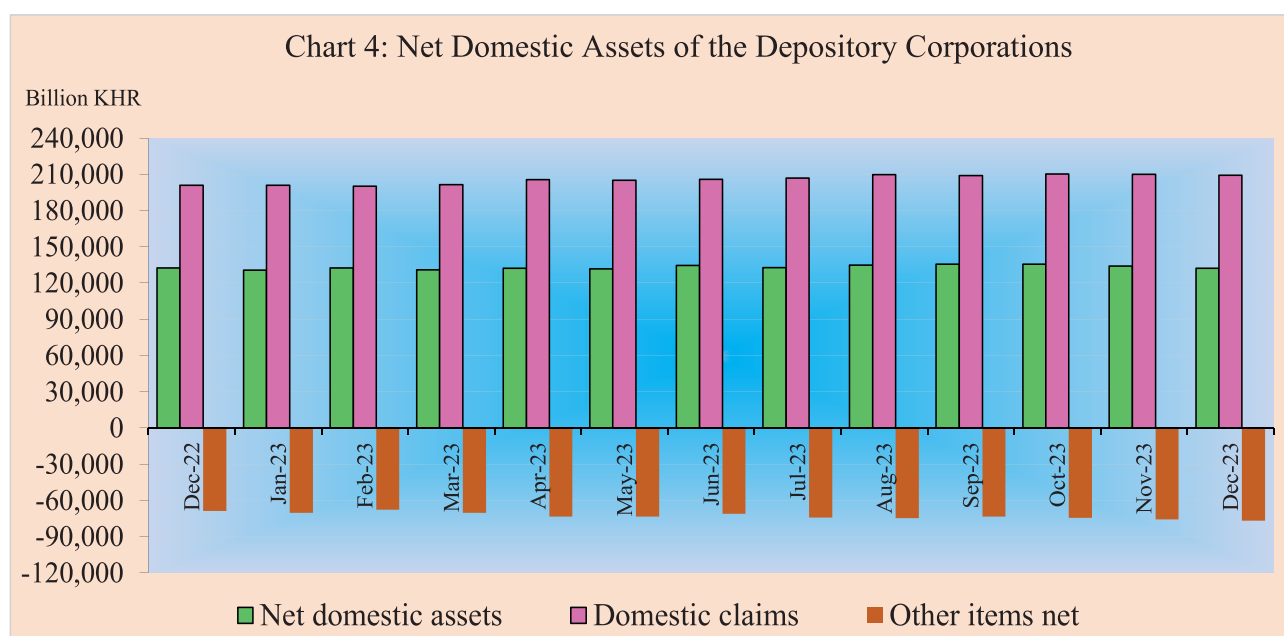
Money Supply

Broad money (M2) increased to KHR 193,530.5 billion in December 2023, up by 0.8% compared to November. The main components of M2 showed that other deposits and currency outside depository corporations increased by 1.4% and 0.6%, respectively, while transferable deposits declined by 2.5%.



Net Domestic Assets of the Depository Corporations

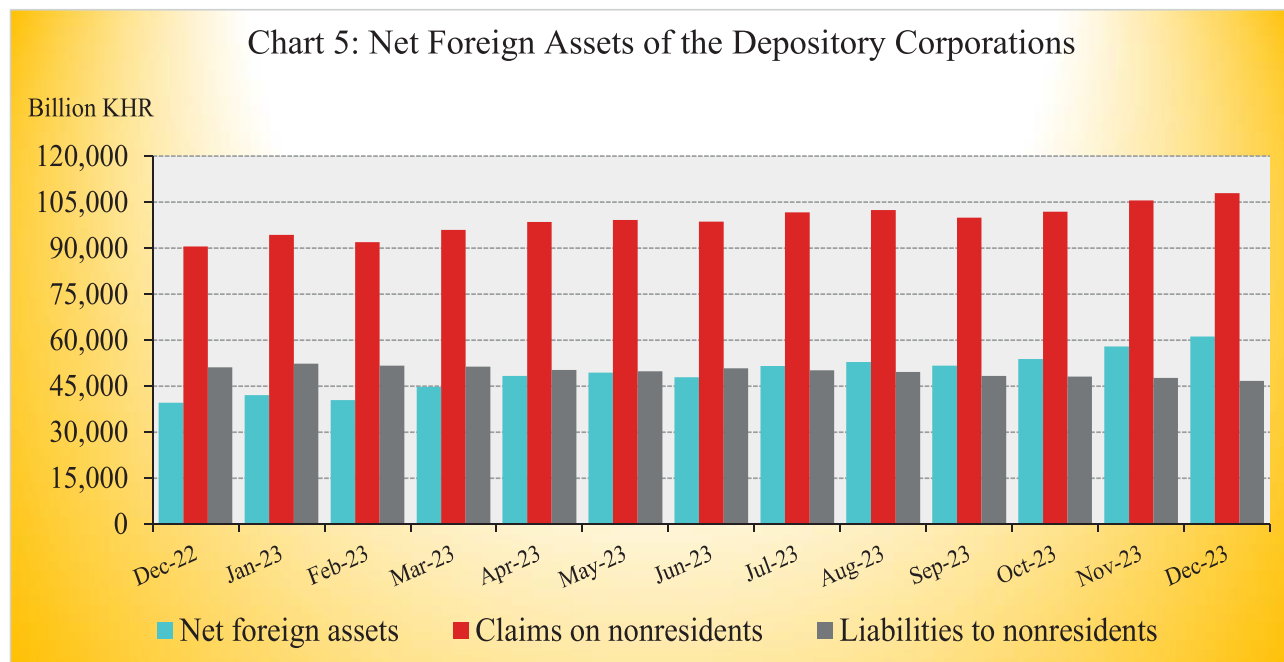
Net domestic assets of the depository corporations continued to decrease to KHR 132,295.3 billion in December 2023, down by 1.4% compared to November. This was due to the decrease of 1.6% and 0.3% in other items net and net domestic credit, respectively.



The decrease in other items net was due to an increase of 3.2% in capital accounts, while others increased by 7.2%. The decrease in net domestic credit was due to the decreases of 5.1% and 3.6% in net credit to other financial corporations and net credit to nonfinancial public sector, respectively, while credit to private sector increased by 0.2%.

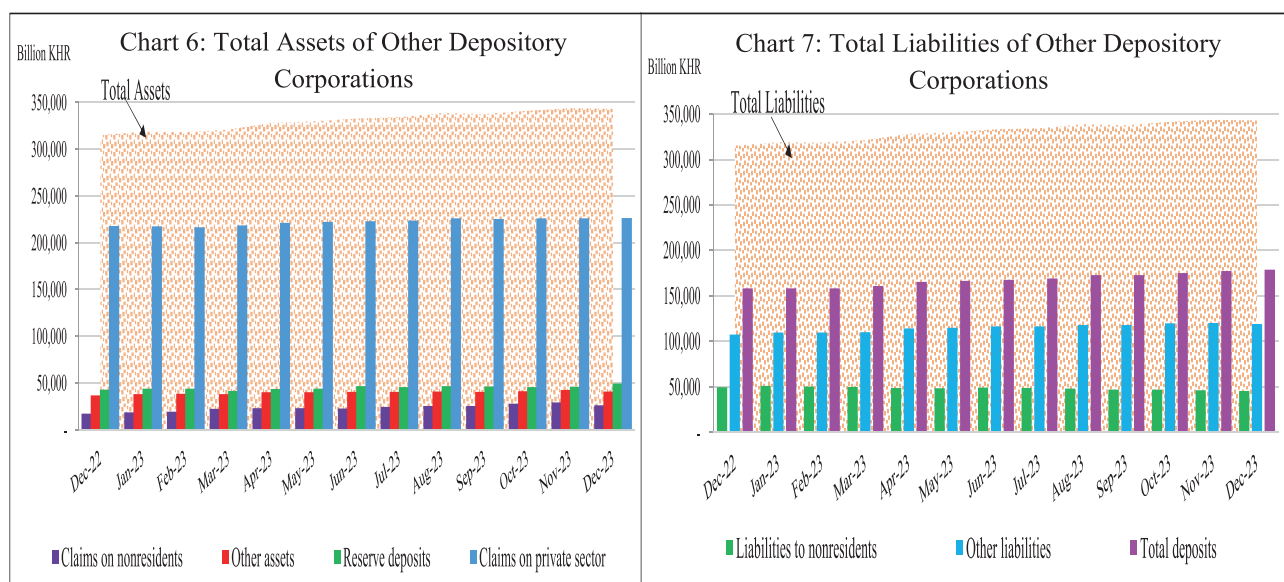
Net Foreign Assets of the Depository Corporations

Net foreign assets of the depository corporation increased to KHR 61,235.2 billion in December 2023, up by 5.7% from November. This was due to the increase of 6.9% in gross foreign reserve along with a decline of 1.8% in foreign liabilities, while other foreign assets declined by 9.8%.



Other Depository Corporations Survey

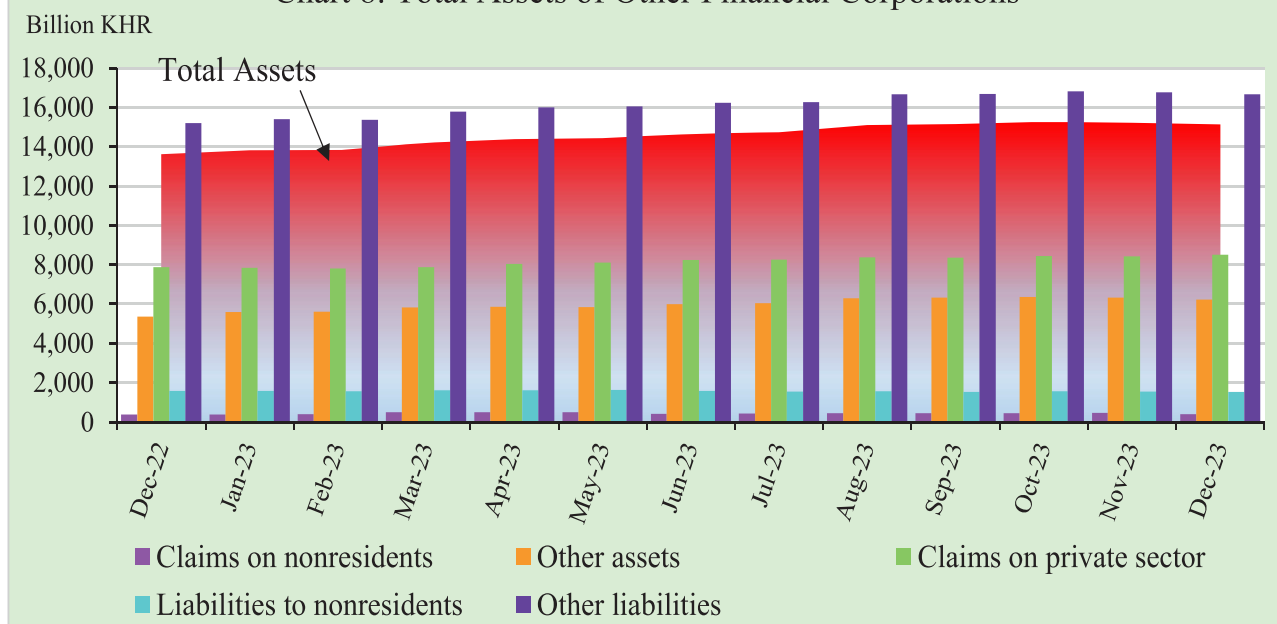
Total assets of other depository corporations (including commercial banks and microfinance deposit-taking institutions) were KHR 343,108.3 billion, down by 0.2% in December 2023 compared to the previous month.



Other Financial Corporations Survey

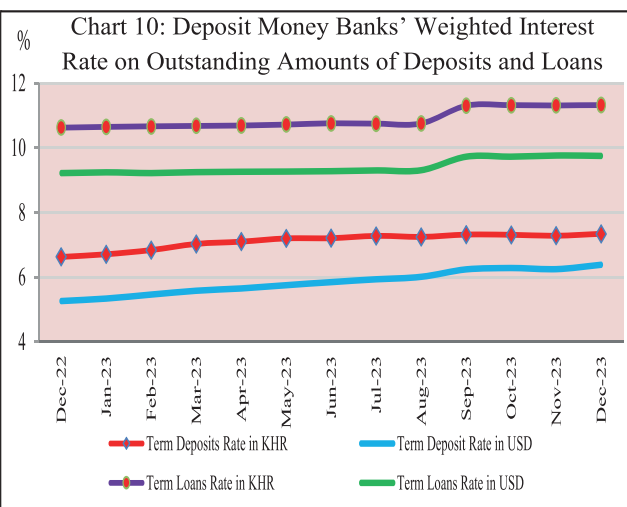
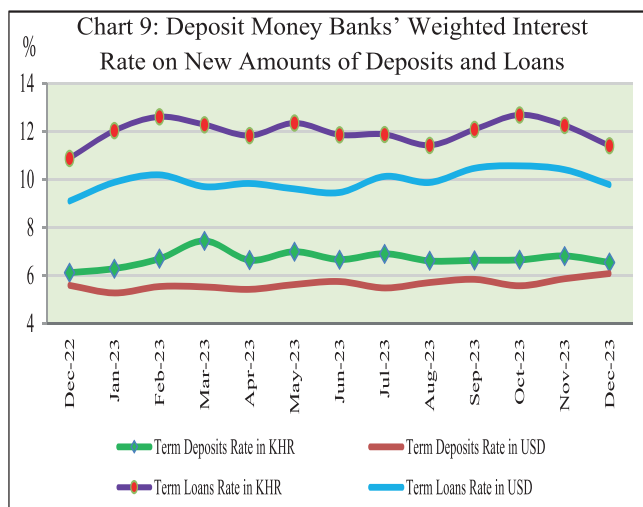
Total assets of other financial corporations (including specialized banks, MFIs and insurance companies) were KHR 15,132.8 billion, down by 0.6% in December 2023 compared to November.

Chart 8: Total Assets of Other Financial Corporations



Interest Rates on Deposits and Loans

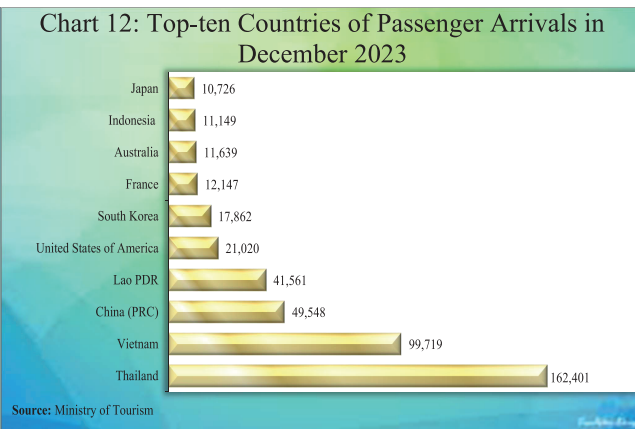
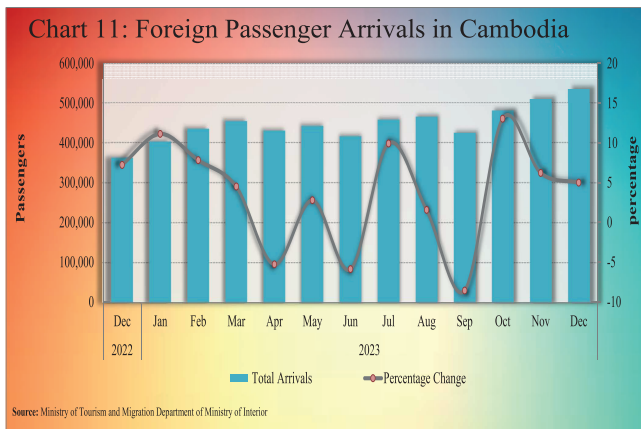
Interest rate on deposits and loans of banking sector in December 2023 showed that the (new amount) weighted average interest rate on term deposits in KHR decreased by 0.28% to 6.54%, while term deposits in USD increased by 0.21% to 6.08%. At the same time, the weighted average interest rate on term loans in KHR decreased by 0.85% to 11.40%, and term loans in USD decreased by 0.63% to 9.78%.



Foreign Tourist Arrivals

In December 2023, the total number of passenger arrivals was 535,788, increased by 5% following the increase of 6.2% in the previous month. The main purposes of the passenger arrivals in Cambodia were for vacation, and business and professional, which were accounted for 81.5% and 15.5% of the total, respectively.

Most of the foreign passengers were from Thailand, Vietnam, China P.R.C., Laos PDR, United States of America, South Korea, France, Australia, Indonesia, and Japan.



International Trade in Goods

International trade in goods showed a deficit of KHR 32.2 billion (0.4%) in December 2023, after the surplus of KHR 90.7 billion (1.1%) in November.



The major components of total exports were Garment, Fish and other agricultural Products, Other Textile Product, Footwear, Electrical Part, Rubber, Rice, Wood Products, Vehicle and Bicycle Part, and Bicycle. In addition, the major components of total imports were Fabric, Oil, Food and Beverage, Equipment Construction, Vehicle, Steel, Garment, Other Electronic Equipment, Fertilizer, Medicine, and Cigarette.

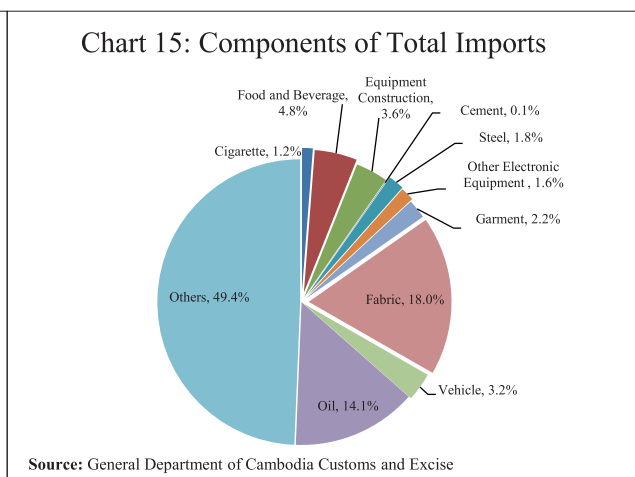
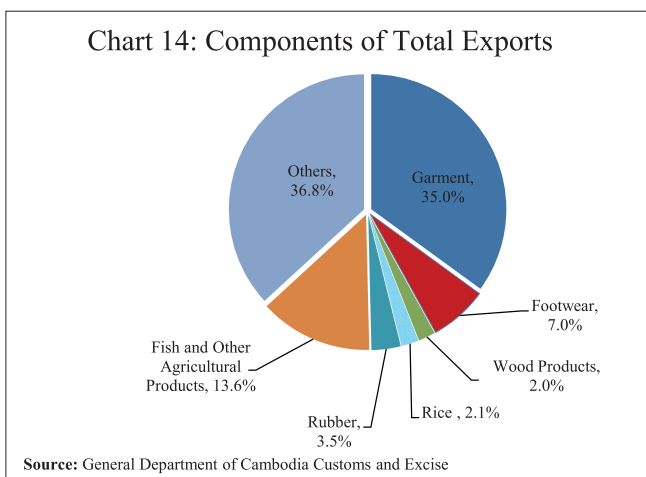


Table 1: Consumer Price Index and Inflation Rate

1. Consumer Price Index (CPI) and Component Indices (Oct-Dec. 2006 = 100)	Aug-23	Sep-23	Oct-23	Nov-23	Dec-23
CPI (all items)	204.76	204.80	204.95	203.62	202.84
Food and Non-Alcoholic Beverages	254.61	255.12	256.21	254.67	253.09
Alcoholic Beverages, Tobacco and Narcotics	184.77	186.05	186.16	186.20	186.53
Clothing and Footwear	183.00	183.22	183.79	183.17	183.05
Housing, Water, Electricity, Gas and other Fuels	142.26	142.21	142.37	141.85	141.60
Furnishings and Household Maintenance	163.66	163.66	163.82	163.65	163.67
Health	144.23	143.74	143.62	142.92	142.38
Transport	129.82	129.30	127.07	124.80	125.64
Communication	66.75	66.70	66.68	66.63	66.58
Recreation and Culture	133.72	133.11	133.48	133.09	132.90
Education	172.29	172.29	172.29	172.29	173.52
Restaurants	333.11	331.53	329.25	325.77	323.88
Miscellaneous Goods and Services	171.68	171.39	171.78	171.73	171.89
2. Percentage Change in the CPI and its Components					
2.1 Month on Month Change (%)					
CPI (all items)	0.86	0.02	0.07	-0.65	-0.38
Food and Non-Alcoholic Beverages	0.64	0.20	0.43	-0.60	-0.62
Alcoholic Beverages, Tobacco and Narcotics	0.68	0.69	0.06	0.02	0.18
Clothing and Footwear	0.70	0.12	0.31	-0.34	-0.06
Housing, Water, Electricity, Gas and other Fuels	0.50	-0.04	0.11	-0.37	-0.17
Furnishings and Household Maintenance	0.20	0.00	0.09	-0.10	0.01
Health	0.19	-0.34	-0.08	-0.49	-0.38
Transport	3.36	-0.40	-1.72	-1.79	0.68
Communication	0.13	-0.08	-0.02	-0.08	-0.07
Recreation and Culture	0.62	-0.46	0.28	-0.30	-0.14
Education	0.00	0.00	0.00	0.00	0.71
Restaurants	1.36	-0.47	-0.69	-1.06	-0.58
Miscellaneous Goods and Services	0.32	-0.17	0.23	-0.03	0.09
2.2 Year on Year Change (%)					
CPI (all items)	3.24	3.75	3.89	2.69	2.72
Food and Non-Alcoholic Beverages	4.20	4.32	4.51	3.55	3.08
Alcoholic Beverages, Tobacco and Narcotics	3.27	3.98	3.92	3.74	3.69
Clothing and Footwear	4.20	3.83	3.81	3.11	3.59
Housing, Water, Electricity, Gas and other Fuels	1.85	2.39	2.96	2.21	2.24
Furnishings and Household Maintenance	1.70	1.71	1.68	1.42	1.39
Health	1.61	1.55	0.20	-0.52	0.43
Transport	0.16	2.69	2.29	-0.92	1.97
Communication	0.41	0.44	0.50	0.37	0.37
Recreation and Culture	3.86	3.93	4.48	3.70	3.39
Education	1.97	1.97	1.97	1.65	2.04
Restaurants	2.87	4.76	5.00	2.46	2.73
Miscellaneous Goods and Services	3.02	3.26	3.59	2.90	2.42
3. Three-month moving average CPI (All Items)					
Year on Year Change (%)	203.31	204.20	204.84	204.46	203.80
	1.72	2.95	3.62	3.44	3.10
4. Twelve-month moving average CPI (All Items)					
Year on Year Change (%)	200.09	200.71	201.35	201.79	202.24
	2.20	2.15	2.18	2.14	2.13

Source: National Institute of Statistics

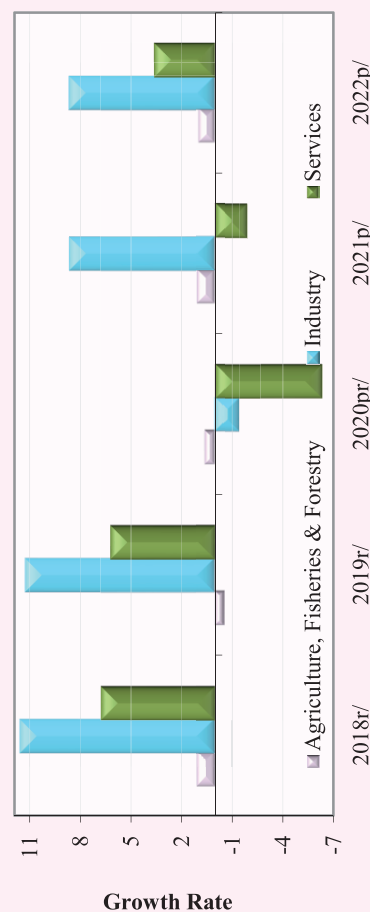
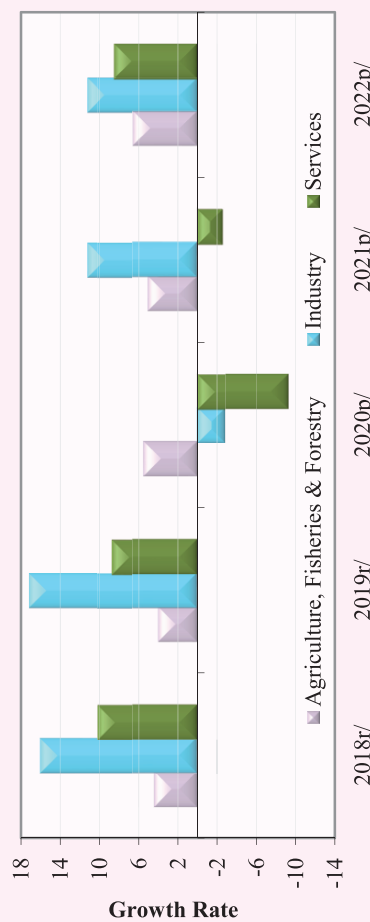
Table 2: Consumer Items Showing Price Decreased in December 2023

No.	Description	Weight	Index			Percentage Change	
			Dec-22	Nov-23	Dec-23	Monthly	Yearly
1	DIESEL	0.144	136.31	139.69	129.76	-7.1	-4.8
2	INFANTS' CLOTHING (BELOW 1 YEAR)	0.054	143.60	145.78	140.67	-3.5	-2.0
3	GASOLINE	4.969	102.02	107.90	104.13	-3.5	2.1
4	FRUIT VEGETABLES	1.138	359.10	390.31	384.24	-1.6	7.0
5	TUBERS AND MUSHROOMS	0.439	222.15	232.89	229.43	-1.5	3.3
6	PULSES/LEGUMES	0.413	258.49	270.20	266.24	-1.5	3.0
7	SUGAR, JAM, HONEY, CHOCOLATE AND CONFECTIONERY	1.489	165.02	173.89	171.52	-1.4	3.9
8	ROOT VEGETABLES	0.456	284.01	308.66	305.11	-1.1	7.4
9	PROCESSED EGGS	0.079	174.30	178.76	176.73	-1.1	1.4
10	LEAF AND STALK VEGETABLES (FRESH)	2.031	240.22	254.96	252.12	-1.1	5.0
11	FOOD PRODUCTS NEC	1.404	250.06	258.29	255.79	-1.0	2.3
12	FRESH FRUITS	4.094	258.01	271.72	269.10	-1.0	4.3
13	PREPARED AND PRESERVED VEGETABLES	0.337	188.78	189.03	187.23	-1.0	-0.8
14	LIQUID FUELS	0.099	162.92	170.76	169.15	-0.9	3.8
15	DRIED AND PRESERVED FRUITS	0.086	196.48	194.93	193.19	-0.9	-1.7
16	FRESH EGGS	1.013	163.39	168.18	166.68	-0.9	2.0
17	OTHER GRAINS	0.090	358.32	372.36	369.29	-0.8	3.1
18	PROCESSED FISH AND SEAFOOD	1.646	301.53	312.89	310.38	-0.8	2.9
19	NOODLES	1.008	239.04	248.84	246.98	-0.7	3.3
20	TRANSPORT SERVICES	0.812	169.76	169.74	168.51	-0.7	-0.7
21	MOTOR OIL	0.062	182.17	198.24	196.88	-0.7	8.1
22	FISH (FRESH)	7.435	266.72	280.75	278.94	-0.6	4.6
23	DRIED NUTS AND EDIBLE SEEDS	0.556	249.43	252.12	250.61	-0.6	0.5
24	BREAD	0.173	250.43	260.93	259.41	-0.6	3.6
25	RESTAURANTS AND HOTELS	5.861	315.28	325.77	323.88	-0.6	2.7
26	SOLID FUELS	1.475	248.68	262.85	261.36	-0.6	5.1
27	MEDICAL PRODUCTS, APPLIANCES AND EQUIPMENT	3.588	140.82	142.21	141.44	-0.5	0.4
28	OTHER ARTICLES OF CLOTHING AND CLOTHING ACCESSORIES	0.059	154.91	161.65	160.87	-0.5	3.8
29	DUCK (FRESH)	0.319	219.82	229.15	228.07	-0.5	3.8
30	GLUTINOUS RICE, QUALITY NO.1, WHITE, KHMER	0.429	151.11	153.26	152.58	-0.4	1.0
31	GAS	2.699	148.88	151.63	151.04	-0.4	1.5
32	LOCALLY PROCESSED MEAT	0.276	274.26	278.37	277.41	-0.3	1.1
33	TRADITIONAL CAKES	0.561	227.40	243.48	242.64	-0.3	6.7
34	COFFEE, TEA AND COCOA	0.755	146.31	148.97	148.46	-0.3	1.5
35	CHICKEN (FRESH)	1.303	237.16	240.54	239.79	-0.3	1.1
36	SEAFOOD (FRESH, CHILLED OR FROZEN)	0.229	262.30	267.04	266.22	-0.3	1.5
37	OILS AND FATS	0.920	232.99	240.25	239.54	-0.3	2.8
38	DAIRY PRODUCTS	1.552	176.73	184.07	183.54	-0.3	3.9
39	PORK (FRESH)	5.618	249.71	257.05	256.38	-0.3	2.7
40	RICE, QUALITY NO.2 WHITE, NEANG-MENH, BATTAMBANG	2.681	251.61	255.22	254.56	-0.3	1.2

Source: National Institute of Statistics

Table 3: Gross Domestic Product (GDP)

	At Constant 2000 Prices					At Current Prices				
	2018r/	2019r/	2020pr/	2021p/	2022p/	2018r/	2019r/	2020p/	2021p/	2022p/
GDP in Billion KHR	52,850	56,578	54,826	56,486	59,503	99,544	110,014	105,892	110,506	121,030
GDP in Million USD	13,001	13,901	13,444	13,889	14,552	24,488	27,030	25,967	27,171	29,599
GDP % Growth Rate	7.5	7.1	-3.1	3.0	5.3	10.8	10.5	-3.7	4.4	9.5
GDP % Growth Rate, by Economic Activity										
Agriculture, Fisheries & Forestry	1.1	-0.5	0.6	1.1	1.0	4.4	4.0	5.5	5.1	6.6
Industry	11.6	11.3	-1.4	8.7	8.7	16.0	17.1	-2.8	11.2	11.2
Services	6.8	6.2	-6.3	-1.9	3.6	10.2	8.7	-9.3	-2.6	8.5
GDP Per Capita in Million KHR	3.4	3.5	3.4	3.4	3.5	6.3	6.9	6.5	6.7	7.2
GDP Per Capita in USD	826	871	831	848	868	1,555	1,694	1,606	1,659	1,765

Chart 1: GDP by Economic Activity
(At Constant 2000 Prices)Chart 2: GDP by Economic Activity
(At Current Prices)

p/: preliminary estimates

pr/: projection

r/: revised

Source: National Institute of Statistics

Table 4: Residential Property Price Index (RPPI)

	Oct-22	Nov-22	Dec-22	Jan-23	Feb-23	Mar-23	Apr-23	May-23	Jun-23	Jul-23	Aug-23	Sep-23	Oct-23	Nov-23	Dec-23
Residential Property Price Index (2020 =100)															
Overall RPPI	115.1	114.8	114.8	113.8	113.1	113.0	114.1	115.6	116.1	115.0	114.8	114.1	113.1	111.9	111.5
RPPI in Phnom Penh	116.8	116.1	116.0	114.8	114.6	114.7	116.2	117.5	117.5	115.9	115.9	115.2	113.8	112.2	111.4
RPPI in Other Provinces	104.0	107.0	107.6	108.2	104.9	104.1	103.1	105.7	109.3	110.4	108.9	108.4	109.7	110.4	111.5
Month on Month Change (%)															
Overall RPPI	0.4	-0.2	0.0	-0.9	-0.6	-0.1	0.9	1.3	0.5	-1.0	-0.2	-0.6	-0.8	-1.1	-0.4
RPPI in Phnom Penh	0.3	-0.6	-0.1	-1.0	-0.2	0.1	1.3	1.1	0.0	-1.3	0.0	-0.7	-1.2	-1.4	-0.7
RPPI in Other Provinces	1.5	2.9	0.6	0.5	-3.1	-0.7	-1.0	2.5	3.3	1.1	-1.4	-0.4	1.2	0.7	0.9
Year on Year Change (%)															
Overall RPPI	3.6	4.2	3.5	2.8	1.1	1.6	4.2	6.4	6.5	2.8	1.1	-0.4	-1.7	-2.5	-2.9
RPPI in Phnom Penh	3.9	4.0	3.3	2.3	0.6	1.2	4.6	6.9	6.4	2.0	0.5	-1.1	-2.6	-3.3	-3.9
RPPI in Other Provinces	3.3	7.0	6.0	7.5	5.4	6.3	4.2	5.3	8.9	9.2	6.6	5.8	5.5	3.2	3.6

Note:

The methodology used to generate the RPPI index is the time-

which complies with the IMF's RPPI Practical Compilation Guide published in 2020 (<https://www.imf.org/en/Data/Statistics/RPPI-guide>).

*Revised data

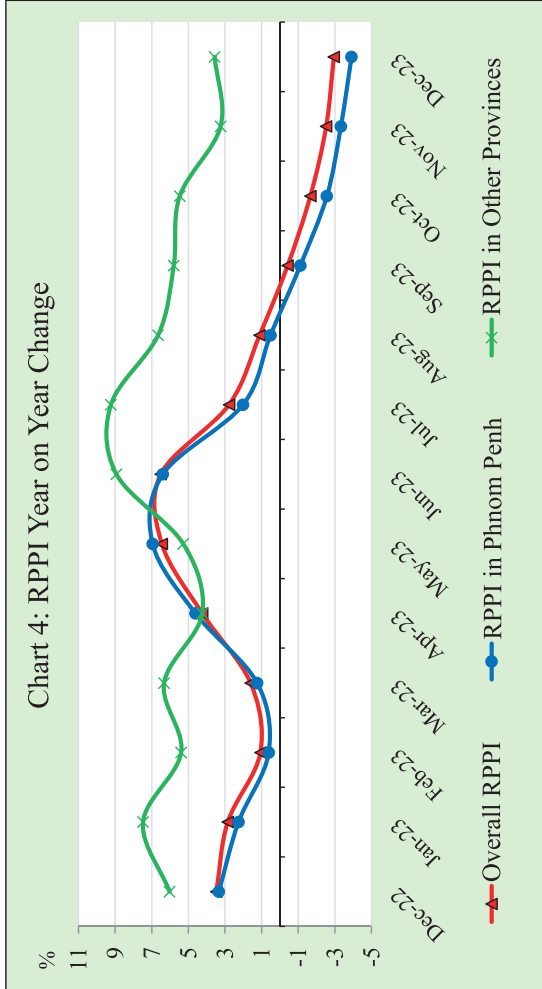
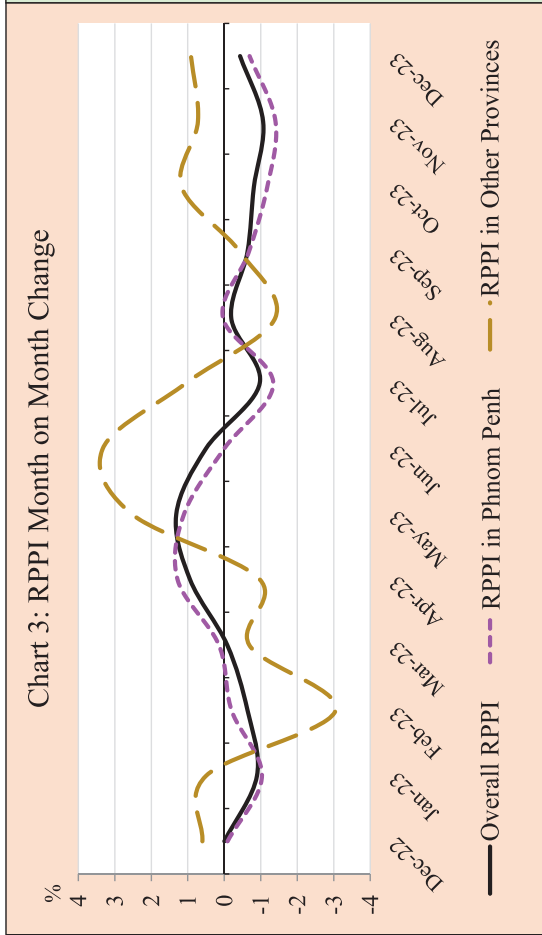


Table 5: Investment Projects Approved by Sectors

(In Million USD)

Sector	Agriculture		Industries		Services		Tourism		Energy		Health care (hospital)		Agro-Industry		Civil Engineering		Infrastructure		Mines		Other		Total			
	Projects	Fixed Assets	Projects	Fixed Assets	Projects	Fixed Assets	Projects	Fixed Assets	Projects	Fixed Assets	Projects	Fixed Assets	Projects	Fixed Assets	Projects	Fixed Assets	Projects	Fixed Assets	Projects	Fixed Assets	Projects	Fixed Assets	Projects	Fixed Assets		
2018																										
Total	13	444.2	115	984.0	10	2,869.9	12	1,577.8	-	-	-	-	-	-	-	-	-	-	-	-	-	-	150	5,875.8		
2019																										
Total	5	68.7	164	859.4	10	1,028.3	17	6,051.6	3	158.6	-	-	-	-	-	-	-	-	-	-	-	-	199	8,166.6		
2020																										
Total	7	105.6	130	1,030.9	5	799.8	6	3,850.5	6	678.7	-	-	-	-	-	-	-	-	-	-	-	-	154	6,465.5		
2021																										
Q3	2	14.0	26	166.6	-	-	-	-	2	13.3	-	-	-	-	-	-	-	-	-	-	-	-	30	193.9		
Q4	1	17.2	19	113.1	-	-	-	-	1	441.4	-	-	-	-	-	-	-	-	-	-	3	11.4	24	583.2		
Total	5	60.3	88	980.6	2	9.9	2	127.8	5	509.7	2	18.8	-	-	-	-	-	-	-	-	3	11.4	107	1,718.7		
2022																										
Q1	3	75.6	28	166.0	1	10.0	1	129.0	1	389.4	1	15.0	2	9.1	1	4.2	1	1,300.0	-	-	-	-	1	8.2	40	2,106.5
Q2	1	4.3	27	181.2	1	12.7	-	-	-	-	-	-	-	-	1	71.6	-	-	-	-	5	64.4	35	334.2		
Q3	-	-	24	122.9	-	-	2	35.3	-	-	3	64.0	1	7.2	-	-	-	-	1	13.0	1	23.4	32	265.8		
Q4	-	-	20	110.8	1	27.5	2	332.4	-	-	-	-	1	44.3	-	-	-	-	-	-	-	-	1	8.1	25	523.0
Total	4	79.9	99	580.9	3	50.2	5	496.6	1	389.4	4	79.0	4	60.5	2	75.8	1	1,300.0	1	13.0	8	104.1	132	3,229.6		
2023																										
Q1	-	-	26	186.5	-	-	-	-	-	-	-	-	-	-	-	-	-	-	-	-	-	-	1	6.0	27	192.6
Q2	8	151.8	38	313.1	1	14.0	2	37.5	-	-	-	-	-	-	-	-	-	-	-	-	-	-	49	516.3		
Q3	3	20.8	45	560.1	1	91.2	1	84.5	-	-	-	-	-	-	-	-	1	1,376.0	-	-	-	-	51	2,132.6		
Q4	2	10.5	46	932.4	1	27.7	-	-	-	-	-	-	-	-	-	-	-	-	-	-	-	-	49.0	970.6		
Total	13	183.0	155	1,992.1	3	132.9	3	122.0	-	-	-	-	-	-	-	-	1	1,376.0	-	-	1	6.0	176	3,812.1		

Chart 5: Investment Fixed Assets by Sectors

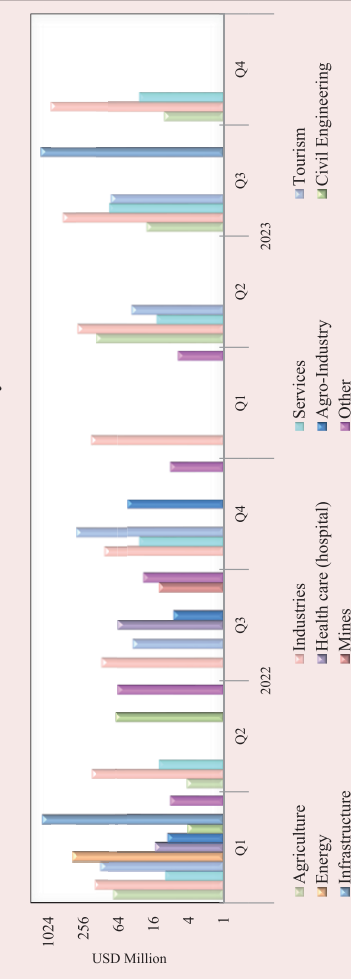
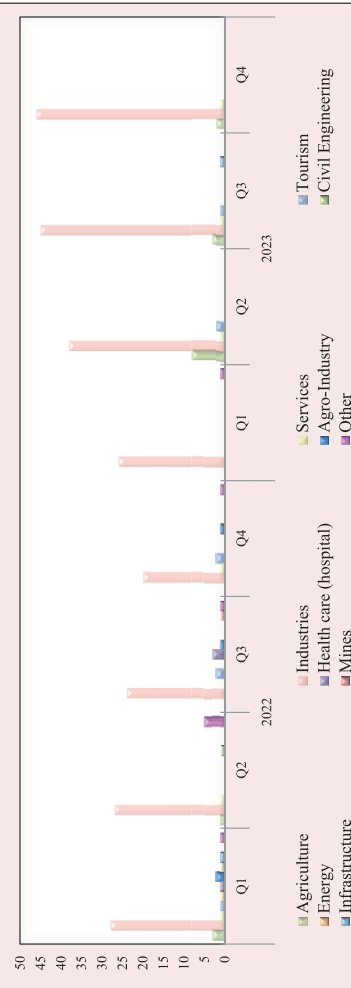


Chart 6: Number of Investment Projects by Sectors



Source: Council for the Development of Cambodia (Cambodian Investment Board)
* Revised data

Table 7: Daily Exchange Rate in December 2023

(KHR/USD)

Day	Parallel Market Rate			Official Rate	Daily Change*	
	Purchase	Sale	Midpoint		Spread	% Change
1	4,111	4,120	4,116	4,115	-2.0	0.0
2	4,109	4,119	4,114	4,115	-2.0	0.0
3	4,109	4,119	4,114	4,115	0.0	0.0
4	4,109	4,119	4,114	4,114	0.0	0.0
5	4,110	4,120	4,115	4,112	1.0	0.0
6	4,111	4,121	4,116	4,114	1.0	0.0
7	4,111	4,121	4,116	4,116	0.0	0.0
8	4,111	4,121	4,116	4,115	0.0	0.0
9	4,107	4,117	4,112	4,115	-4.0	-0.1
10	4,107	4,117	4,112	4,115	0.0	0.0
11	4,105	4,115	4,110	4,114	-2.0	0.0
12	4,105	4,115	4,110	4,109	0.0	0.0
13	4,106	4,115	4,111	4,108	1.0	0.0
14	4,106	4,116	4,111	4,109	0.0	0.0
15	4,106	4,116	4,111	4,110	0.0	0.0
16	4,106	4,116	4,111	4,110	0.0	0.0
17	4,106	4,116	4,111	4,110	0.0	0.0
18	4,105	4,115	4,110	4,111	-1.0	0.0
19	4,103	4,112	4,108	4,108	-2.0	0.0
20	4,102	4,111	4,107	4,106	-1.0	0.0
21	4,101	4,109	4,105	4,106	-1.0	0.0
22	4,097	4,106	4,102	4,102	-4.0	-0.1
23	4,092	4,104	4,098	4,102	-5.0	-0.1
24	4,092	4,104	4,098	4,102	0.0	0.0
25	4,092	4,103	4,098	4,100	0.0	0.0
26	4,091	4,101	4,096	4,095	-1.0	0.0
27	4,090	4,099	4,095	4,094	-1.0	0.0
28	4,086	4,096	4,091	4,092	-4.0	-0.1
29	4,080	4,090	4,085	4,085	-6.0	-0.1
30	4,080	4,090	4,085	4,085	0.0	0.0
31	4,080	4,090	4,085	4,085	0.0	0.0
Average Rate	4,101	4,111	4,106	4,106	-1.1	0.0

* Spread of Daily Purchasing Market Rate

Table 8: Monthly Exchange Rate

(KHR/USD, End-Period)

Month	Market Rate				Official Rate
	Purchase	Monthly %Change	Sale	Midpoint	
Dec-15	4,048	0.10	4,055	4,052	4,050
Dec-16	4,039	0.17	4,050	4,045	4,037
Dec-17	4,037	0.07	4,046	4,042	4,037
Dec-18	4,027	-0.27	4,039	4,033	4,018
Dec-19	4,079	0.12	4,089	4,084	4,075
Dec-20	4,069	0.00	4,084	4,077	4,045
Dec-21	4,109	0.17	4,118	4,114	4,074
2022					
Feb	4,086	-0.05	4,095	4,091	4,066
Mar	4,068	-0.44	4,078	4,073	4,050
Apr	4,068	0.00	4,080	4,074	4,046
May	4,088	0.49	4,097	4,093	4,062
Jun	4,091	0.07	4,100	4,096	4,070
Jul	4,097	0.15	4,104	4,101	4,099
Aug	4,104	0.17	4,115	4,110	4,107
Sep	4,117	0.32	4,126	4,122	4,119
Oct	4,135	0.44	4,145	4,140	4,141
Nov	4,110	-0.60	4,120	4,115	4,122
Dec	4,113	0.07	4,123	4,118	4,117
2023					
Jan	4,102	-0.27	4,113	4,108	4,104
Feb	4,050	-1.27	4,063	4,057	4,043
Mar	4,051	0.02	4,062	4,057	4,054
Apr	4,114	1.56	4,126	4,120	4,115
May	4,116	0.05	4,126	4,121	4,116
Jun	4,126	0.24	4,136	4,131	4,130
Jul	4,124	-0.05	4,134	4,129	4,130
Aug	4,151	0.65	4,161	4,156	4,158
Sep	4,119	-0.77	4,130	4,125	4,122
Oct	4,129	0.24	4,137	4,133	4,135
Nov	4,113	-0.39	4,123	4,118	4,115
Dec	4,080	-0.80	4,090	4,085	4,085

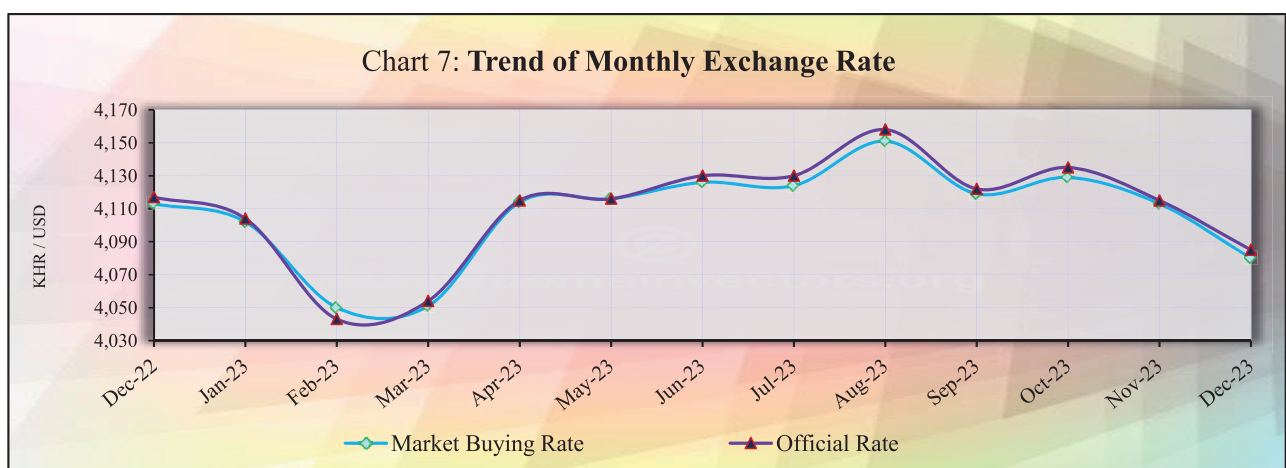


Table 9: The Value of KHR Against Other Currencies

(Official Buying Rate, End-Period)

Unit	SDR	US Dollar	Euro	Japanese Yen	British Pounds	Indonesian Rupiah	Malaysian Ringgit	Philippines Peso	Singapore Dollar	Thai Baht	Vietnamese Dong	China Yuan
	1	1	1	100	1	1000	1	100	1	1	1000	1
Dec-18	5,588	4,018	4,597	3,641	5,098	277	969	7,653	2,942	124	174	584
Dec-19	5,635	4,075	4,565	3,743	5,344	293	994	8,050	3,023	136	176	583
Dec-20	5,826	4,045	4,962	3,908	5,465	287	1,000	8,423	3,049	135	175	619
Dec-21	5,702	4,074	4,614	3,541	5,499	286	977	7,992	3,015	122	179	639
2022												
Feb	5,669	4,066	4,546	3,518	5,436	283	968	7,920	2,993	124	178	644
Mar	5,602	4,050	4,521	3,314	5,320	282	964	7,787	2,994	122	177	638
Apr	5,421	4,046	4,254	3,097	5,049	279	928	7,745	2,920	118	176	611
May	5,480	4,062	4,376	3,179	5,136	279	931	7,767	2,972	119	175	610
Jun	5,425	4,070	4,250	2,978	4,936	274	925	7,393	2,922	116	175	607
Jul	5,398	4,099	4,177	3,050	4,989	275	921	7,346	2,972	113	175	608
Aug	5,356	4,107	4,117	2,961	4,789	277	918	7,308	2,938	113	175	595
Sep	5,255	4,119	4,049	2,853	4,605	270	889	6,985	2,878	108	173	578
Oct	5,323	4,141	4,124	2,805	4,802	266	877	7,144	2,935	109	167	571
Nov	5,417	4,122	4,254	2,971	4,923	262	915	7,288	2,997	116	167	576
Dec	5,479	4,117	4,378	3,079	4,956	263	931	7,392	3,053	119	174	591
2023												
Jan	5,545	4,104	4,468	3,155	5,083	274	967	7,524	3,125	125	175	608
Feb	5,368	4,043	4,267	2,969	4,837	265	903	7,283	2,995	115	170	581
Mar	5,454	4,054	4,409	3,062	5,010	269	918	7,452	3,054	118	173	590
Apr	5,561	4,115	4,547	3,074	5,129	280	923	7,385	3,081	121	175	594
May	5,481	4,116	4,405	2,936	5,092	275	894	7,312	3,041	118	175	581
Jun	5,514	4,130	4,508	2,862	5,224	276	884	7,470	3,052	116	175	570
Jul	5,571	4,130	4,527	2,956	5,291	274	907	7,526	3,098	121	174	577
Aug	5,513	4,158	4,518	2,840	5,253	273	895	7,330	3,071	118	172	570
Sep	5,405	4,122	4,336	2,759	5,015	266	876	7,235	3,006	112	169	565
Oct	5,418	4,135	4,363	2,764	5,002	260	868	7,261	3,023	115	168	565
Nov	5,487	4,115	4,523	2,793	5,226	267	885	7,431	3,091	118	170	578
Dec	5,481	4,085	4,541	2,899	5,231	265	887	7,363	3,102	120	168	575
Monthly % Change	-0.11	-0.73	0.40	3.80	0.10	-0.75	0.23	-0.92	0.36	1.69	-1.18	-0.52

Table 10: Deposit Money Bank's Interest Rates on Deposits and Loans in KHR and USD

	Dec-19	Dec-20	Dec-21	Jan-22	Feb-22	Mar-22	Apr-22	May-22	Jun-22	Jul-22	Aug-22	Sep-22	Oct-22	Nov-22	Dec-22	Jan-23	Feb-23	Mar-23	Apr-23	May-23	Jun-23	Jul-23	Aug-23	Sep-23	Oct-23	Nov-23	Dec-23		
<i>Weighted Average Rate on New Amount</i>																													
Interest Rate on Deposits and Loans in KHR																													
Deposit																													
Demand Deposits	0.12	0.03	0.35	0.12	0.10	0.09	0.17	0.20	0.20	0.29	0.19	0.19	0.16	0.20	0.18	0.18	0.18	0.18	0.18	0.19	0.16	0.20	0.18	0.18	0.18	0.25	0.24	0.24	0.19
Saving Deposits	0.60	0.60	1.05	0.73	0.75	0.73	0.77	0.70	0.81	0.85	0.85	0.88	0.87	0.88	0.89	0.88	0.89	0.87	0.88	0.87	0.88	0.89	0.87	0.89	0.87	0.89	0.89	0.91	0.83
Term Deposits	4.10	5.34	4.79	5.78	5.63	6.78	5.90	6.05	6.39	6.12	6.29	6.70	7.45	6.64	7.00	6.67	6.91	6.61	6.64	7.00	6.67	6.99	6.61	6.64	6.65	6.65	6.82	6.54	
Other Deposits	2.47	3.49	2.20	5.97	0.93	2.31	4.97	5.17	5.64	7.16	6.32	5.06	7.10	6.72	4.77	6.99	6.52	6.10	6.28	4.77	6.99	6.52	6.10	6.28	6.23	6.51	7.09		
Overdraft	7.72	7.14	6.32	12.03	9.54	9.87	13.61	10.64	7.44	7.38	7.99	8.49	9.41	9.42	9.06	9.46	9.48	10.66	10.66	9.42	9.06	9.46	9.48	10.66	10.49	10.48	8.89	7.61	
Credit Card	16.73	14.21	13.84	14.17	14.71	14.73	12.96	13.11	14.13	15.66	12.72	14.72	13.68	15.73	13.62	13.61	14.01	14.97	13.24	14.01	13.62	13.61	14.01	14.97	13.24	14.34	14.34	16.20	
Term Loans	9.13	10.15	10.18	11.02	11.33	11.59	11.60	11.55	11.38	10.88	12.03	12.61	12.28	11.82	11.87	11.86	11.87	11.42	12.08	11.82	11.86	11.87	11.42	12.08	12.69	12.25	11.40		
Other Loans	5.59	6.47	7.00	5.87	5.63	6.99	7.02	6.84	7.18	5.24	7.54	7.41	7.67	7.20	7.60	6.89	6.65	6.88	6.71	7.20	7.60	6.89	6.65	6.88	6.71	7.05	7.52	4.93	
Interest Rate on Deposits and Loans in USD																													
Deposit																													
Demand Deposits	0.20	0.10	0.18	0.17	0.20	0.18	0.18	0.20	0.25	0.32	0.29	0.33	0.36	0.33	0.36	0.37	0.38	0.33	0.33	0.36	0.36	0.37	0.38	0.33	0.43	0.42	0.43	0.26	
Saving Deposits	0.24	0.17	0.21	0.23	0.22	0.22	0.22	0.46	0.24	0.30	0.28	0.28	0.28	0.28	0.30	0.41	0.30	0.26	0.30	0.31	0.41	0.30	0.41	0.30	0.26	0.30	0.32	0.28	0.42
Term Deposits	3.44	3.24	3.98	4.17	4.24	4.44	4.72	4.78	5.12	5.59	5.28	5.54	5.53	5.42	5.63	5.75	5.49	5.71	5.84	5.75	5.42	5.63	5.75	5.84	5.57	5.87	6.08		
Other Deposits	2.47	0.80	3.93	4.74	2.09	4.30	4.42	6.18	6.29	6.57	5.75	3.08	6.85	6.39	6.83	7.14	6.19	6.64	7.42	6.39	6.83	7.14	6.19	6.64	7.42	6.46	7.57	6.20	
Loans																													
Overdraft	7.57	6.15	5.97	7.06	7.14	8.08	7.56	7.45	7.48	7.68	7.39	7.71	7.39	7.45	7.81	7.93	7.53	8.32	8.08	7.45	7.81	7.93	7.53	8.32	8.08	8.25	8.30	8.13	
Credit Card	11.97	17.02	17.27	18.14	17.62	17.58	17.37	18.54	17.68	17.45	18.02	17.51	17.84	17.91	17.99	17.82	17.70	17.51	17.22	17.91	17.99	17.82	17.70	17.51	17.22	18.14	17.72	18.25	
Term Loans	8.72	9.11	9.09	8.48	9.18	9.39	11.45	9.73	9.49	9.10	9.88	10.19	9.70	9.83	9.61	9.46	10.13	9.88	10.46	9.61	9.46	10.13	9.88	10.46	10.57	10.41	9.78		
Other Loans	6.50	6.01	5.93	6.13	6.35	6.33	6.04	6.70	6.63	6.67	6.78	6.75	6.84	7.28	7.36	7.41	7.22	7.28	7.41	7.28	7.36	7.41	7.22	7.28	7.41	7.51	7.69	7.23	
Weighted Average Rate on Outstanding Amount																													
Interest Rate on Deposits and Loans in KHR																													
Deposit																													
Demand Deposits	0.22	0.19	0.47	0.40	0.41	0.46	0.45	0.50	0.55	0.54	0.42	0.47	0.37	0.43	0.42	0.40	0.44	0.47	0.51	0.43	0.42	0.40	0.44	0.47	0.51	0.51	0.54	0.57	
Saving Deposits	0.91	0.82	1.02	0.97	1.02	1.02	1.02	1.06	0.92	1.12	1.18	1.16	1.12	1.09	1.18	1.18	1.18	1.18	1.23	1.23	1.23	1.23	1.23	1.23	1.23	1.23	1.27	1.24	
Term Deposits	5.42	5.66	5.85	6.24	6.27	6.30	6.37	6.45	6.51	6.63	6.71	6.84	7.03	7.10	7.20	7.21	7.28	7.25	7.32	7.10	7.20	7.21	7.28	7.25	7.32	7.31	7.28	7.34	
Other Deposits	2.81	3.20	2.20	5.75	1.51	1.49	1.39	1.24	2.17	2.23	1.88	1.66	1.63	1.71	1.74	2.32	2.39	5.97	6.26	1.71	1.74	2.32	2.39	5.97	6.26	6.30	6.56	6.67	
Loans																													
Overdraft	8.08	7.93	8.26	8.63	8.59	8.60	8.57	8.59	8.33	8.48	8.47	8.42	8.41	8.44	8.45	8.40	8.44	8.46	8.48	8.44	8.45	8.40	8.44	8.46	8.48	8.51	8.09	8.14	
Credit Card	17.29	16.25	15.30	14.72	14.68	14.68	14.28	14.24	14.36	14.26	14.07	14.13	14.06	13.94	14.16	14.05	14.10	13.95	13.78	13.94	14.16	14.05	14.10	13.95	13.78	13.73	13.82	13.85	
Term Loans	10.62	10.54	10.52	10.64	10.60	10.60	10.60	10.61	10.61	10.62	10.65	10.67	10.68	10.69	10.72	10.76	10.75	11.30	10.75	11.30	10.72	10.76	10.75	11.30	10.75	11.32	11.31	11.32	
Other Loans	6.28	6.73	6.67	6.42	6.41	6.40	6.77	6.41	6.61	6.46	6.64	6.53	6.61	6.63	6.57	6.58	6.47	6.70	6.44	6.63	6.57	6.58	6.47	6.70	6.44	6.44	6.39	6.06	
Interest Rate on Deposits and Loans in USD																													
Deposit																													
Demand Deposits	0.35	0.41	0.40	0.40	0.43	0.42	0.44	0.52	0.56	0.60	0.70	0.76	0.77	0.72	0.79	0.75	0.79	0.81	0.79	0.72	0.79	0.75	0.79	0.81	0.79	0.81	0.85	0.88	
Saving Deposits	0.43	0.41	0.47	0.57	0.56	0.56	0.58	0.61	0.55	0.65	0.66	0.66	0.67	0.67	0.72	0.71	0.75	0.71	0.77	0.67	0.72	0.71	0.75	0.71	0.77	0.79	0.78	0.78	
Term Deposits	4.34	4.40	4.53	4.70	4.77	4.83	4.91	4.99	5.10	5.26	5.34	5.46	5.58	5.65	5.75	5.85	5.93	6.01	6.24	5.65	5.75	5.85	5.93	6.01	6.24	6.28	6.25	6.38	
Other Deposits	2.43	0.94	3.28	2.65	1.24	1.95	1.05	1.33	2.35	2.76	2.45	2.47	2.49	2.28	2.47	2.13	2.11	4.56	4.62	2.28	2.47	2.13	2.11	4.56	4.62	4.70	4.78	3.90	
Loans																													
Overdraft	7.82	7.71	7.47	7.38	7.41	7.37	7.39	7.37	7.36	7.38	7.44	7.44	7.45	7.45	7.49	7.51	7.53	7.57	7.83	7.45	7.49	7.51	7.53	7.57	7.83	7.67	7.69	7.71	
Credit Card	15.53	17.11	16.62	16.58	16.39	16.27	16.64	16.26	16.19	16.13	16.33	16.16	16.08	16.33	16.12	16.15	16.15	16.03	15.99	16.08	16.12	16.15	16.15	16.03	15.99	15.95	16.04	16.06	
Term Loans	9.51	9.36	9.18	9.03	9.16	9.15	9.16	9.18	9.18	9.22	9.24	9.22	9.25	9.26	9.27	9.28	9.30	9.31	9.73	9.26	9.27	9.28	9.30	9.31	9.73	9.73	9.76	9.75	
Other Loans	7.19	6.93	6.83	6.81	6.79	6.78	7.08	6.84	6.89	6.86	6.92	7.03	7.12	7.13	7.15	7.08	7.31	7.33	7.38	7.12	7.15	7.08	7.31	7.33	7.38	7.40	7.44	7.47	

Including Commercial Banks and Specialized Banks
*Revised Data

Table 11: Central Bank Survey*

(In Billion KHR)

	Aug-23	Sep-23	Oct-23	Nov-23	Dec-23
Net Foreign Assets	75,764.2	73,117.5	72,763.2	74,996.7	80,304.6
Claims on Nonresidents	77,161.2	74,487.1	74,136.1	76,387.0	81,693.4
Liabilities to Nonresidents	-1,397.0	-1,369.6	-1,372.9	-1,390.3	-1,388.8
Claims on Other Depository Corporations	1,402.9	1,309.5	1,149.4	1,051.1	1,161.9
Net Claims on Central Government	-12,520.4	-11,907.5	-11,845.4	-11,739.5	-11,956.1
Claims on Central Government	0.0	0.0	0.0	0.0	0.0
Liabilities to Central Government	-12,520.4	-11,907.5	-11,845.4	-11,739.5	-11,956.1
Claims on Other Sectors	62.9	89.8	49.3	45.6	31.3
Claims on Other Financial Corporations	4.2	0.0	0.0	0.0	0.0
Claims on State and Local Government	0.0	0.0	0.0	0.0	0.0
Claims on Public Nonfinancial Corporations	0.0	0.0	0.0	0.0	0.0
Claims on Private Sector	58.7	89.8	49.3	45.6	31.3
Monetary Base	56,251.0	54,789.2	54,479.6	55,829.5	59,166.0
Currency in Circulation	17,399.7	17,162.3	17,111.8	17,552.1	17,345.9
Liabilities to Other Depository Corporations	38,805.5	37,583.5	37,294.3	38,251.9	41,795.1
Liabilities to Other Sectors	45.7	43.5	73.6	25.5	25.1
Other Liabilities to Other Depository Corporations	8,937.5	9,425.5	9,181.6	8,776.7	8,541.0
Deposits And Securities Other Than Shares Excl. Form Monetary Base	50.1	49.9	49.7	49.6	49.4
Deposits Included in Broad Money	0.0	0.0	0.0	0.0	0.0
Securities Other Than Shares Incl. in Broad Money	0.0	0.0	0.0	0.0	0.0
Deposits Excl. From Broad Money	50.1	49.9	49.7	49.6	49.4
Securities Other Than Shares Excl. From Broad Money	0.0	0.0	0.0	0.0	0.0
Loans	0.0	0.0	0.0	0.0	0.0
Financial Derivatives	0.0	0.0	0.0	0.0	0.0
Shares and Other Equity	2,627.2	1,498.9	1,624.5	2,903.0	4,973.9
Other Items (Net)	-3,156.1	-3,154.2	-3,218.8	-3,204.9	-3,188.5
<i>IFS Vertical Check</i>	<i>0.0</i>	<i>0.0</i>	<i>0.0</i>	<i>0.0</i>	<i>0.0</i>

* Included only central bank

** Revised Data

Table 12: Other Depository Corporations Survey*

(In Billion KHR)

	Aug-23	Sep-23	Oct-23	Nov-23	Dec-23
Net Foreign Assets	-22,934.1	-21,491.8	-18,966.9	-17,050.4	-19,069.4
Claims on Nonresidents	25,305.1	25,473.3	27,797.7	29,126.4	26,264.0
Liabilities to Nonresidents	-48,239.1	-46,965.1	-46,764.6	-46,176.8	-45,333.4
Claims On Central Bank	48,929.6	48,960.9	48,296.8	48,842.6	52,109.3
Currency	2,229.2	2,645.5	2,445.8	2,668.6	2,370.9
Reserve Deposits and Securities Other Than Shares	46,678.3	46,295.9	45,835.9	46,163.6	49,729.5
Other Claims on Central Bank	22.2	19.4	15.0	10.3	8.9
Net Claims on Central Government	-8,849.6	-9,113.5	-9,129.9	-8,884.1	-9,445.3
Claims on Central Government	341.7	314.1	346.0	363.7	329.6
Liabilities to Central Government	-9,191.3	-9,427.6	-9,475.9	-9,247.9	-9,774.9
Claims on Other Sectors	231,102.5	230,194.4	231,107.1	230,678.2	230,825.1
Claims on Other Financial Corporations	5,088.5	4,786.1	4,791.2	4,639.1	4,364.3
Claims on State and Local Government	0.0	0.0	0.0	0.0	0.0
Claims on Public Nonfinancial Corporations	1.4	0.8	0.8	0.8	31.0
Claims on Private Sector	226,012.5	225,407.5	226,315.0	226,038.3	226,429.7
Liabilities to Central Bank	3,676.2	3,752.1	3,653.7	3,687.5	3,725.0
Transferable Deposits Incl. in Broad Money	27,920.8	27,739.9	27,410.4	28,631.5	27,908.9
Other Deposits Incl. in Broad Money	144,487.7	144,937.4	147,374.2	148,528.2	150,621.5
Securities Other Than Shares Incl. in Broad Money	0.0	0.0	0.0	0.0	0.0
Deposits Excl. From Broad Money	224.4	217.4	208.5	231.2	255.8
Securities Other Than Shares Excl. From Broad Money	0.0	0.0	0.0	0.0	0.0
Loans	2,290.8	2,157.6	2,155.8	2,331.8	2,261.9
Financial Derivatives	0.0	0.0	0.0	0.0	0.0
Shares and Other Equity	62,220.5	61,832.0	62,004.3	61,670.1	61,635.7
Other Items (Net)	7,428.0	7,913.5	8,500.0	8,506.0	8,010.9
<i>IFS Vertical Check</i>	<i>0.0</i>	<i>0.0</i>	<i>0.0</i>	<i>0.0</i>	<i>0.0</i>

* Included commercial banks and MDIs

** Revised Data

Table 13: Depository Corporations Survey*

(In Billion KHR)

	Aug-23	Sep-23	Oct-23	Nov-23	Dec-23
Net Foreign Assets	52,830.1	51,625.7	53,796.3	57,946.3	61,235.2
Claims on Nonresidents	102,466.2	99,960.4	101,933.8	105,513.4	107,957.4
Liabilities to Nonresidents	-49,636.1	-48,334.7	-48,137.5	-47,567.2	-46,722.2
Domestic Claims	209,795.4	209,263.2	210,181.0	210,100.2	209,455.0
Net Claims on Central Government	-21,370.0	-21,021.0	-20,975.3	-20,623.6	-21,401.4
Claims on Central Government	341.7	314.1	346.0	363.7	329.6
Liabilities to Central Government	-21,711.6	-21,335.1	-21,321.3	-20,987.4	-21,731.0
Claims on Other Sectors	231,165.4	230,284.2	231,156.3	230,723.8	230,856.4
Claims on Other Financial Corporations	5,092.8	4,786.1	4,791.2	4,639.1	4,364.3
Claims on State and Local Government	0.0	0.0	0.0	0.0	0.0
Claims on Public Nonfinancial Corporations	1.4	0.8	0.8	0.8	31.0
Claims on Private Sector	226,071.2	225,497.3	226,364.3	226,083.9	226,461.0
Broad Money Liabilities (M2)	187,624.8	187,237.5	189,524.1	192,068.6	193,530.5
Currency Outside Depository Corporations	15,170.5	14,516.8	14,665.9	14,883.5	14,975.0
Transferable Deposits	27,948.0	27,765.0	27,465.8	28,638.9	27,916.0
Other Deposits	144,506.2	144,955.8	147,392.4	148,546.3	150,639.5
Securities Other Than Shares	0.0	0.0	0.0	0.0	0.0
<i>of which Foreign Currency (of M2)</i>	<i>155,696.9</i>	<i>155,758.8</i>	<i>157,569.2</i>	<i>159,903.2</i>	<i>161,308.1</i>
Deposits Excl. From Broad Money	274.5	267.3	258.2	280.7	305.1
Securities Other Than Shares Excl. From Broad Money	0.0	0.0	0.0	0.0	0.0
Loans	2,290.8	2,157.6	2,155.8	2,331.8	2,261.9
Financial Derivative	0.0	0.0	0.0	0.0	0.0
Shares and Other Equity	64,847.7	63,330.9	63,628.8	64,573.0	66,609.6
Other Items (Net)	7,587.7	7,895.5	8,410.5	8,792.2	7,983.1
<i>IFS Vertical Check</i>	<i>0.0</i>	<i>0.0</i>	<i>0.0</i>	<i>0.0</i>	<i>0.0</i>

* Included data of central bank and other depository corporations(ODCs)

** Revised Data

Table 14: Other Financial Corporations Survey*

(In Billion KHR)

	Aug-23	Sep-23	Oct-23	Nov-23	Dec-23
Net Foreign Assets	-1,105.6	-1,077.3	-1,100.6	-1,083.6	-1,126.7
Claims on Nonresidents	443.8	454.0	454.1	459.2	399.2
Liabilities to Nonresidents	-1,549.4	-1,531.3	-1,554.7	-1,542.9	-1,526.0
Claims on Depository Corporations	4,950.0	4,987.5	5,012.4	4,984.4	4,790.9
Net Claims on Central Government	-17.8	-13.3	-13.7	-13.3	-13.8
Claims on Central Government	1.0	5.1	5.2	5.4	5.4
Liabilities to Central Government	-18.8	-18.4	-18.9	-18.7	-19.2
Claims on Other Sectors	8,378.6	8,364.4	8,451.7	8,436.0	8,502.7
Claims on State and Local Government	0.0	0.0	0.0	0.0	0.0
Claims on Public Nonfinancial Corporations	2.7	4.0	4.0	4.0	2.7
Claims on Private Sector	8,375.9	8,360.4	8,447.7	8,432.1	8,500.1
Deposit	5.6	1.6	1.6	1.6	1.7
Securities Other Than Shares	0.0	0.0	0.0	0.0	0.0
Loans	5,009.5	5,014.1	5,059.6	5,046.4	4,968.5
Financial Derivatives	0.0	0.0	0.0	0.0	0.0
Shares and Other Equity	5,433.3	5,398.0	5,460.3	5,446.2	5,397.2
Other Items (Net)	-193.6	-188.9	-208.3	-207.3	-279.9
<i>IFS Vertical Check</i>	<i>0.0</i>	<i>0.0</i>	<i>0.0</i>	<i>0.0</i>	<i>0.0</i>

* Included only specialized banks from Dec-2013 to Dec-2020.
From Jan-2021 to present, OFCs included Specialized Banks,
MFIs and Insurance Companies.

** Revised Data

Table 15: Financial Corporations Survey*

(In Billion KHR)

	Aug-23	Sep-23	Oct-23	Nov-23	Dec-23
Net Foreign Assets	51,724.5	50,548.4	52,695.7	56,862.6	60,108.5
Claims on Nonresidents	102,910.1	100,414.4	102,388.0	105,972.7	108,356.6
Liabilities to Nonresidents	-51,185.5	-49,866.0	-49,692.2	-49,110.0	-48,248.1
Domestic Claims	213,063.4	212,828.2	213,827.7	213,883.8	213,579.6
Net Claims on Central Government	-21,387.8	-21,034.3	-20,989.0	-20,637.0	-21,415.2
Claims on Central Government	342.6	319.2	351.2	369.1	335.1
Liabilities to Central Government	-21,730.4	-21,353.5	-21,340.2	-21,006.1	-21,750.2
Claims on Other Sectors	234,451.2	233,862.5	234,816.8	234,520.8	234,994.8
Claims on State and Local Government	0.0	0.0	0.0	0.0	0.0
Claims on Public Nonfinancial Corporations	4.1	4.8	4.8	4.8	33.7
Claims on Private Sector	234,447.1	233,857.7	234,812.0	234,516.0	234,961.1
Currency Outside Financial Corporations	15,159.1	14,504.3	14,652.5	14,872.1	14,963.9
Deposits	169,796.2	169,975.9	172,018.9	174,442.0	175,860.1
Securities Other Than Shares	0.0	0.0	0.0	0.0	0.0
Loans	6,925.9	6,904.0	6,958.1	7,008.8	6,900.2
Financial Derivatives	0.0	0.0	0.0	0.0	0.0
Shares and Other Equity	70,281.0	68,728.9	69,089.1	70,019.3	72,006.9
Other Items (Net)	675.4	1,226.9	1,768.3	2,367.7	1,891.4
<i>IFS Vertical Check</i>	<i>0.0</i>	<i>0.0</i>	<i>0.0</i>	<i>0.0</i>	<i>0.0</i>

* Included data of depository corporations and other financial corporations

** Revised Data

Chart 8: Financial Corporations Survey

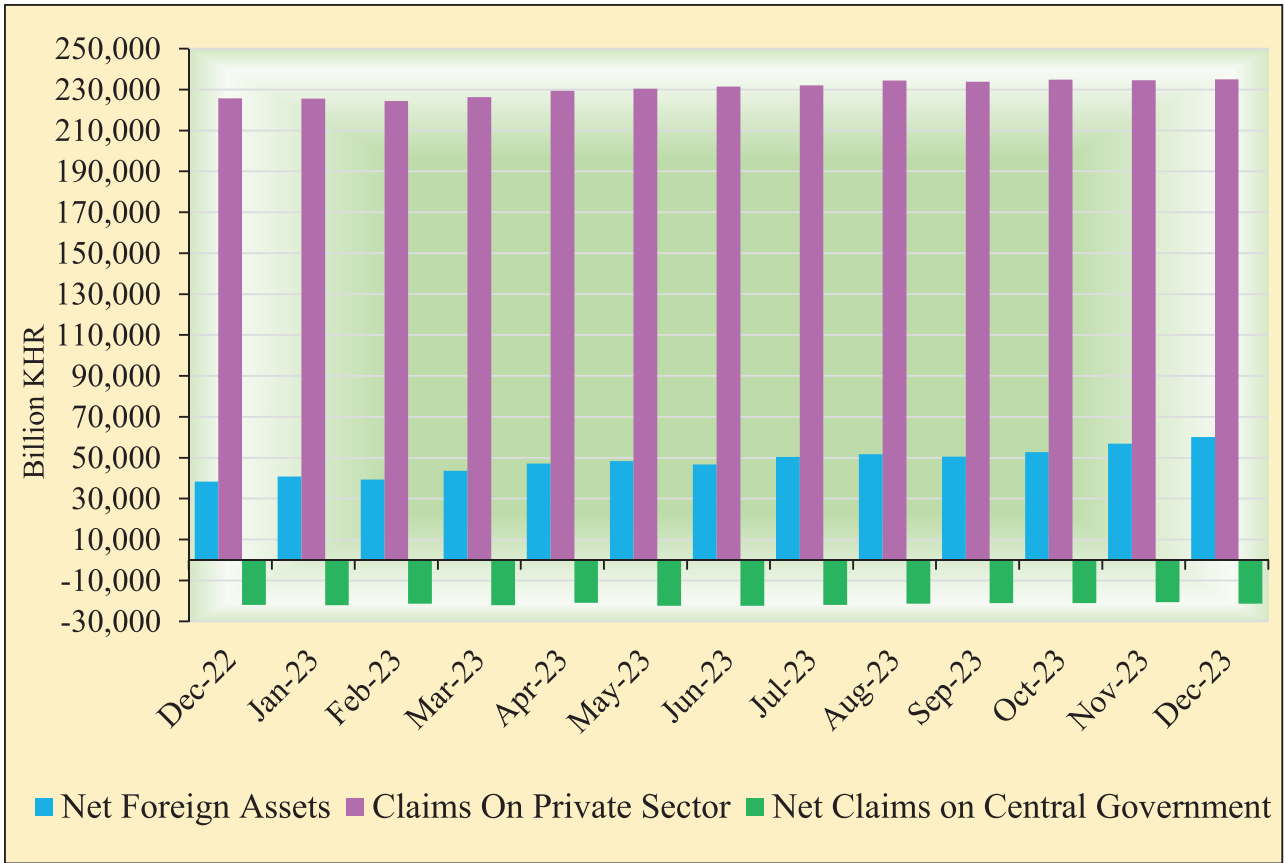


Chart 9: Monetary Aggregates Components

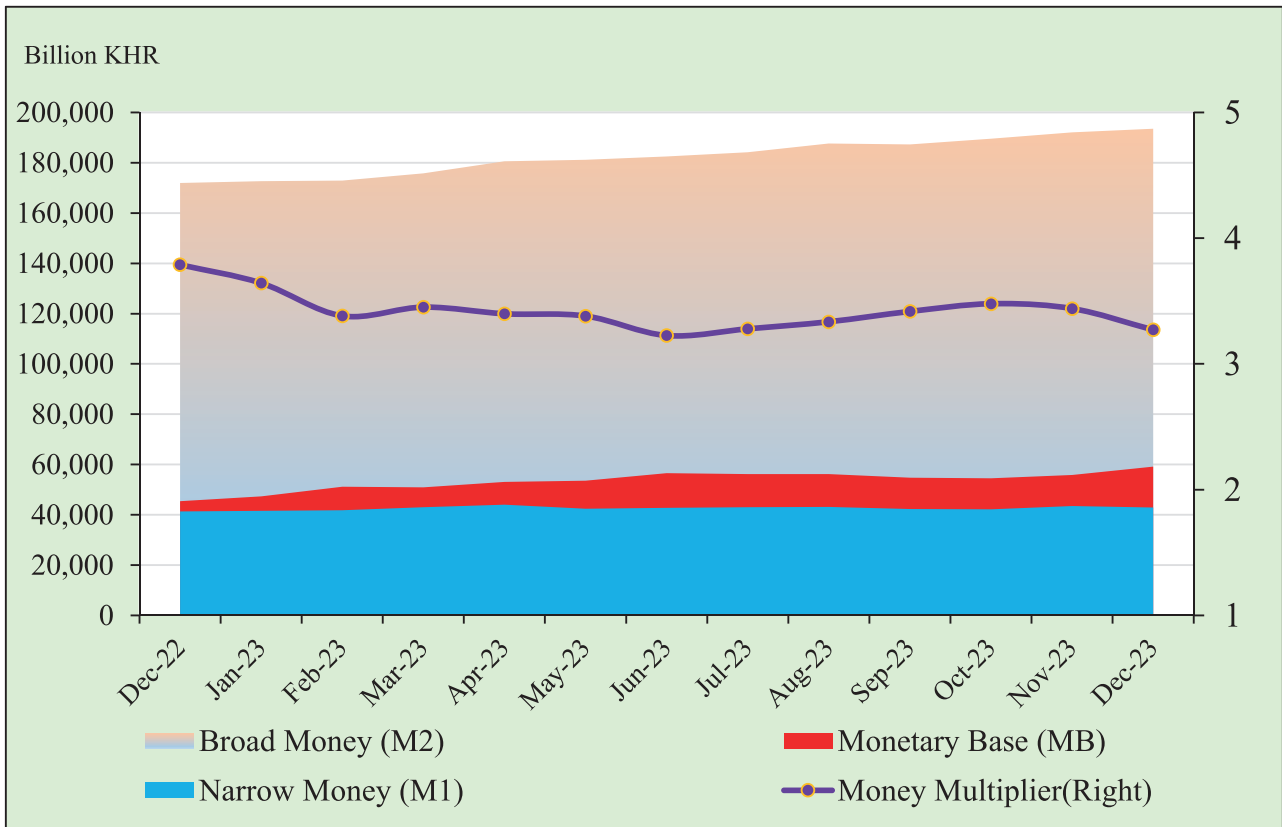


Table 16: Credit Granted by Banking Institutions Classified by Industry

(In Billion KHR)

	Aug-23	Sep-23	Oct-23	Nov-23	Dec-23
1. Financial Institutions	8,276.6	8,050.7	8,062.3	7,829.2	7,834.8
1.1. National Bank of Cambodia	0.0	0.0	0.0	0.0	0.0
1.2. Depository Institutions	6,121.6	6,171.1	6,185.4	5,984.9	5,979.7
1.3. Other Financial Institutions	2,155.0	1,879.6	1,876.9	1,844.3	1,855.1
2. Non-Financial Institutions	144,729.5	158,384.6	159,085.4	159,383.6	160,915.0
2.1. Agriculture, Forestry and Fishing	15,812.9	19,166.0	19,264.2	19,256.2	19,248.2
2.2. Mining and Quarrying	1,083.7	1,055.0	1,042.8	1,054.1	1,089.1
2.3. Manufacturing	8,930.9	9,156.1	9,267.8	9,316.9	9,333.5
2.4. Utilities	2,335.4	2,454.8	2,473.2	2,491.8	2,415.4
2.5. Construction	18,461.8	20,366.7	20,402.2	20,200.9	20,829.2
2.6. Wholesale Trade	18,292.2	18,680.1	19,304.7	19,191.9	19,278.3
2.7. Retail Trade	32,202.4	37,103.2	37,290.0	37,347.1	37,170.6
2.8. Hotels and Restaurants	8,216.3	8,481.6	8,408.8	8,455.9	8,406.4
2.9. Transport and Storage	5,098.1	6,084.1	6,067.0	6,058.5	6,060.4
2.10. Information Media and Telecommunications	1,179.6	1,122.0	1,064.1	1,085.4	1,073.0
2.11. Rental and Operational Leasing Activities, Excluding Real Estate Leasing and Rentals	2,467.6	2,764.3	2,831.9	2,864.1	2,854.5
2.12. Real Estate Activities	19,940.6	21,248.4	21,113.7	20,909.4	22,177.5
2.13. Other Non-Financial Services	10,708.2	10,702.3	10,555.1	11,151.3	10,979.0
3. Personal Essentials	45,395.5	49,641.3	49,825.6	49,417.1	49,712.3
3.1. Personal Lending	15,220.7	20,192.9	20,339.3	20,079.3	20,544.6
3.2. Credit Cards	644.4	640.5	671.8	690.5	709.2
3.3. Mortgages, Owner-Occupied Housing only	29,530.5	28,807.8	28,814.6	28,647.3	28,458.5
4. Other Lending	2,803.9	3,961.4	3,974.6	3,937.1	2,753.3
Total Gross Loan	201,205.4	220,037.9	220,947.8	220,567.0	221,215.4

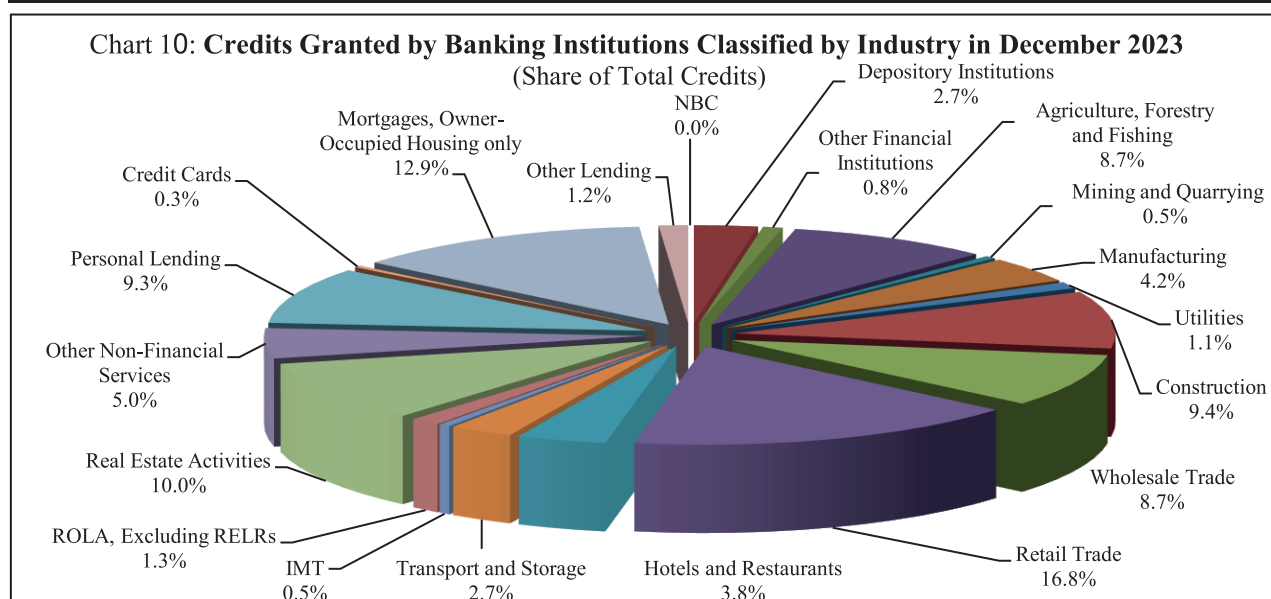


Table 17: Monthly Change of Credit Granted by Banking Institutions Classified by Industry

	Aug-23	Sep-23	Oct-23	Nov-23	Dec-23
(Monthly Change in Billion KHR)					
1. Financial Institutions	186.6	-225.9	11.6	-233.1	5.6
1.1. National Bank of Cambodia	0.0	0.0	0.0	0.0	0.0
1.2. Depository Institutions	138.8	49.5	14.3	-200.5	-5.2
1.3. Other Financial Institutions	47.8	-275.4	-2.7	-32.6	10.9
2. Non-Financial Institutions	1,386.5	13,655.1	700.8	298.3	1,531.4
2.1. Agriculture, Forestry and Fishing	97.7	3,353.1	98.2	-7.9	-8.1
2.2. Mining and Quarrying	13.8	-28.7	-12.2	11.4	34.9
2.3. Manufacturing	203.4	225.2	111.7	49.1	16.5
2.4. Utilities	42.4	119.4	18.4	18.6	-76.5
2.5. Construction	162.1	1,904.9	35.5	-201.3	628.3
2.6. Wholesale Trade	26.4	387.9	624.6	-112.8	86.4
2.7. Retail Trade	306.2	4,900.9	186.7	57.1	-176.5
2.8. Hotels and Restaurants	44.0	265.3	-72.9	47.2	-49.5
2.9. Transport and Storage	13.6	986.0	-17.0	-8.5	1.9
2.10. Information Media and Telecommunications	208.9	-57.7	-57.9	21.3	-12.4
2.11. Rental and Operational Leasing Activities, Excluding Real Estate Leasing and Rentals	58.3	296.8	67.5	32.2	-9.6
2.12. Real Estate Activities	182.1	1,307.8	-134.7	-204.3	1,268.2
2.13. Other Non-Financial Services	27.7	-5.9	-147.2	596.2	-172.3
3. Personal Essentials	617.8	4,245.8	184.4	-408.5	295.2
3.1. Personal Lending	-192.1	4,972.2	146.4	-260.0	465.3
3.2. Credit Cards	32.1	-3.9	31.2	18.7	18.7
3.3. Mortgages, Owner-Occupied Housing only	777.8	-722.6	6.7	-167.3	-188.8
4. Other Lending	-18.1	1,157.5	13.2	-37.5	-1,183.8
Total Gross Loan	2,172.8	18,832.5	909.9	-380.8	648.4
(Monthly Percentage Change)					
1. Financial Institutions	2.3	-2.7	0.1	-2.9	0.1
1.1. National Bank of Cambodia	0.0	0.0	0.0	0.0	0.0
1.2. Depository Institutions	2.3	0.8	0.2	-3.2	-0.1
1.3. Other Financial Institutions	2.3	-12.8	-0.1	-1.7	0.6
2. Non-Financial Institutions	1.0	9.4	0.4	0.2	1.0
2.1. Agriculture, Forestry and Fishing	0.6	21.2	0.5	0.0	0.0
2.2. Mining and Quarrying	1.3	-2.6	-1.2	1.1	3.3
2.3. Manufacturing	2.3	2.5	1.2	0.5	0.2
2.4. Utilities	1.8	5.1	0.8	0.8	-3.1
2.5. Construction	0.9	10.3	0.2	-1.0	3.1
2.6. Wholesale Trade	0.1	2.1	3.3	-0.6	0.5
2.7. Retail Trade	1.0	15.2	0.5	0.2	-0.5
2.8. Hotels and Restaurants	0.5	3.2	-0.9	0.6	-0.6
2.9. Transport and Storage	0.3	19.3	-0.3	-0.1	0.0
2.10. Information Media and Telecommunications	21.5	-4.9	-5.2	2.0	-1.1
2.11. Rental and Operational Leasing Activities, Excluded Real Estate Leasing and Rentals	2.4	12.0	2.4	1.1	-0.3
2.12. Real Estate Activities	0.9	6.6	-0.6	-1.0	6.1
2.13. Other Non-Financial Services	0.3	-0.1	-1.4	5.6	-1.5
3. Personal Essentials	1.4	9.4	0.4	-0.8	0.6
3.1. Personal Lending	-1.2	32.7	0.7	-1.3	2.3
3.2. Credit Cards	5.2	-0.6	4.9	2.8	2.7
3.3. Mortgages, Owner-Occupied Housing only	2.7	-2.4	0.0	-0.6	-0.7
4. Other Lending	-0.6	41.3	0.3	-0.9	-30.1
Total Gross Loan	1.1	9.4	0.4	-0.2	0.3

Table 18: Deposits with Deposit Money Banks

(In Billion KHR)

	Aug-23	Sep-23	Oct-23	Nov-23	Dec-23
Deposits in KHR					
Demand deposits	4,543.5	4,729.0	4,405.6	4,288.0	4,382.4
Savings deposits	4,249.6	4,193.5	4,346.1	4,168.4	4,262.1
Fixed deposits	10,730.6	11,618.4	11,992.6	12,298.3	12,372.1
Others	344.7	380.0	398.2	420.3	411.6
Total	19,868.4	20,920.9	21,142.5	21,175.0	21,428.3
Deposits in Foreign Currency*					
Demand deposits	27,833.1	27,601.3	27,316.8	28,344.2	27,460.7
Savings deposits	38,754.7	39,091.6	39,428.5	40,047.7	41,800.0
Fixed deposits	81,234.8	91,873.8	93,431.1	93,681.6	94,530.9
Others	2,402.5	2,739.4	2,824.5	2,846.8	2,850.9
Total	150,225.1	161,306.1	163,000.9	164,920.3	166,642.4
Grand Total	170,093.4	182,226.9	184,143.4	186,095.3	188,070.7

* Deposits in foreign currency include deposits of Cambodian residents and non-residents

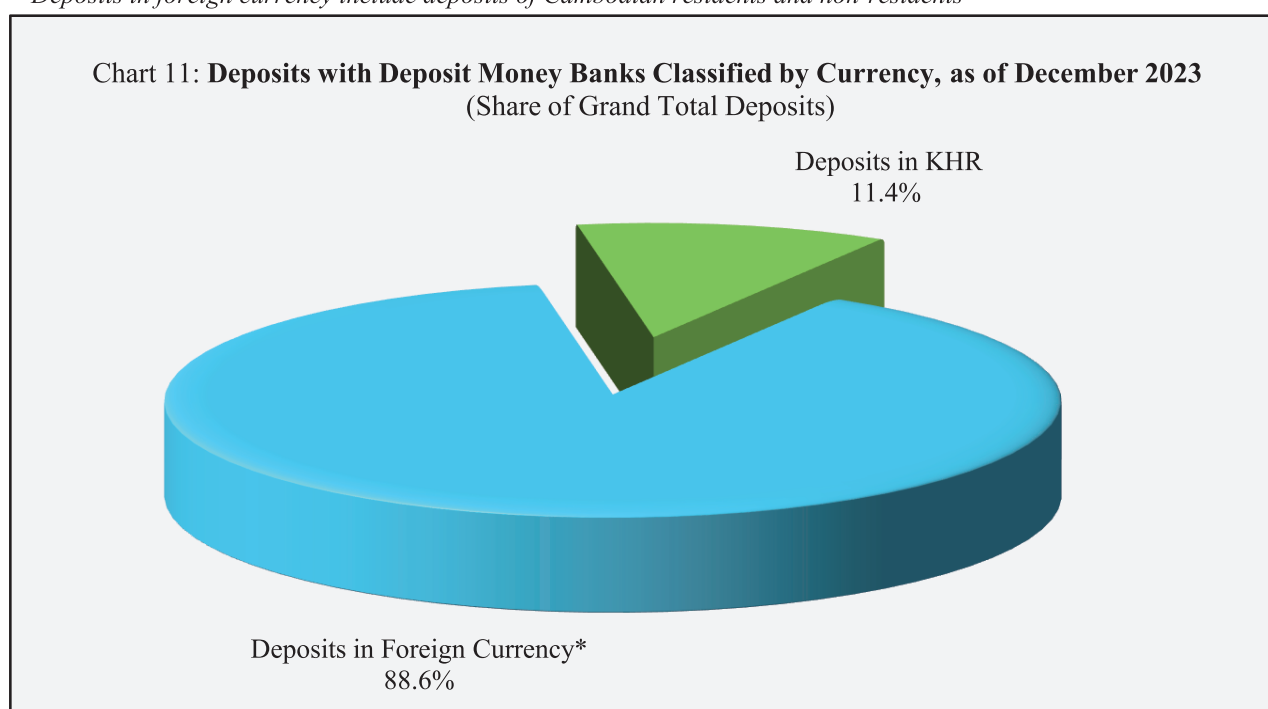


Table 19: Monthly Change of Deposits with Deposit Money Banks

	Aug-23	Sep-23	Oct-23	Nov-23	Dec-23
	(Change in Billion KHR)				
Deposits in KHR					
Demand deposits	-189.0	185.4	-323.3	-117.7	94.5
Savings deposits	234.3	-56.1	152.6	-177.7	93.7
Fixed deposits	441.0	887.7	374.3	305.7	73.8
Others	11.8	35.4	18.2	22.1	-8.7
Total	498.0	1,052.5	221.7	32.5	253.2
Deposits in Foreign Currency					
Demand deposits	193.0	-231.8	-284.5	1,027.4	-883.5
Savings deposits	709.2	336.8	337.0	619.2	1,752.3
Fixed deposits	2,098.5	10,639.0	1,557.3	250.5	849.3
Others	56.6	337.0	85.0	22.4	4.1
Total	3,057.4	11,081.0	1,694.8	1,919.4	1,722.2
Grand Total	3,555.4	12,133.5	1,916.5	1,951.9	1,975.4
	(Percentage Change)				
Deposits in KHR					
Demand deposits	-4.0	4.1	-6.8	-2.7	2.2
Savings deposits	5.8	-1.3	3.6	-4.1	2.2
Fixed deposits	4.3	8.3	3.2	2.5	0.6
Others	3.6	10.3	4.8	5.6	-2.1
Total	2.6	5.3	1.1	0.2	1.2
Deposits in Foreign Currency					
Demand deposits	0.7	-0.8	-1.0	3.8	-3.1
Savings deposits	1.9	0.9	0.9	1.6	4.4
Fixed deposits	2.7	13.1	1.7	0.3	0.9
Others	2.4	14.0	3.1	0.8	0.1
Total	2.1	7.4	1.1	1.2	1.0
Grand Total	2.1	7.1	1.1	1.1	1.1

Chart 12: Deposits in KHR Classified by Type, as of December 2023

(Share of Total KHR Deposits)

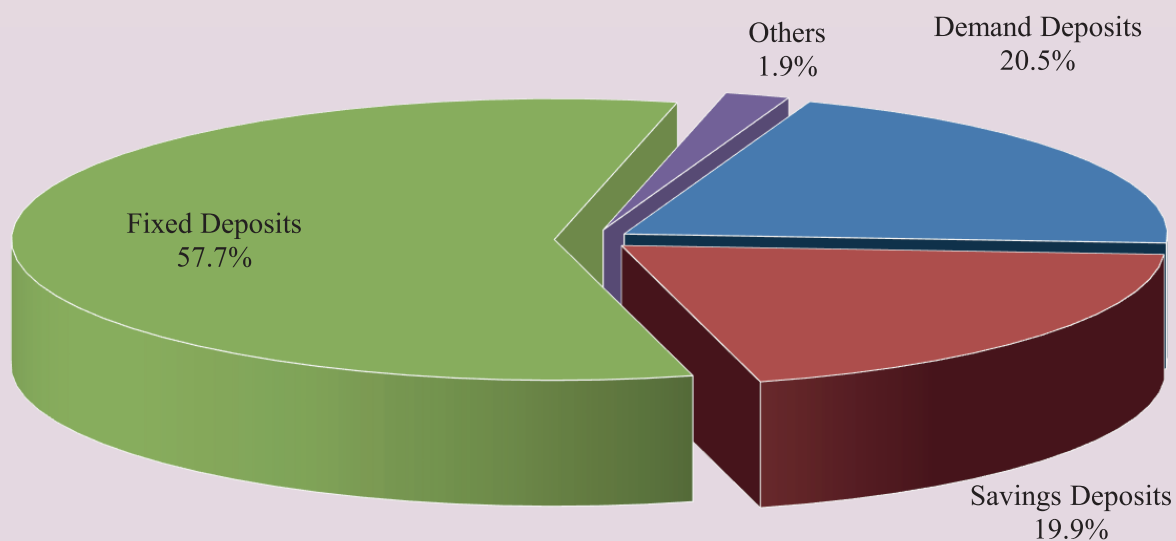


Chart 13: Deposits in Foreign Currency Classified by Type, as of December 2023

(Share of Total Foreign Currency Deposits)

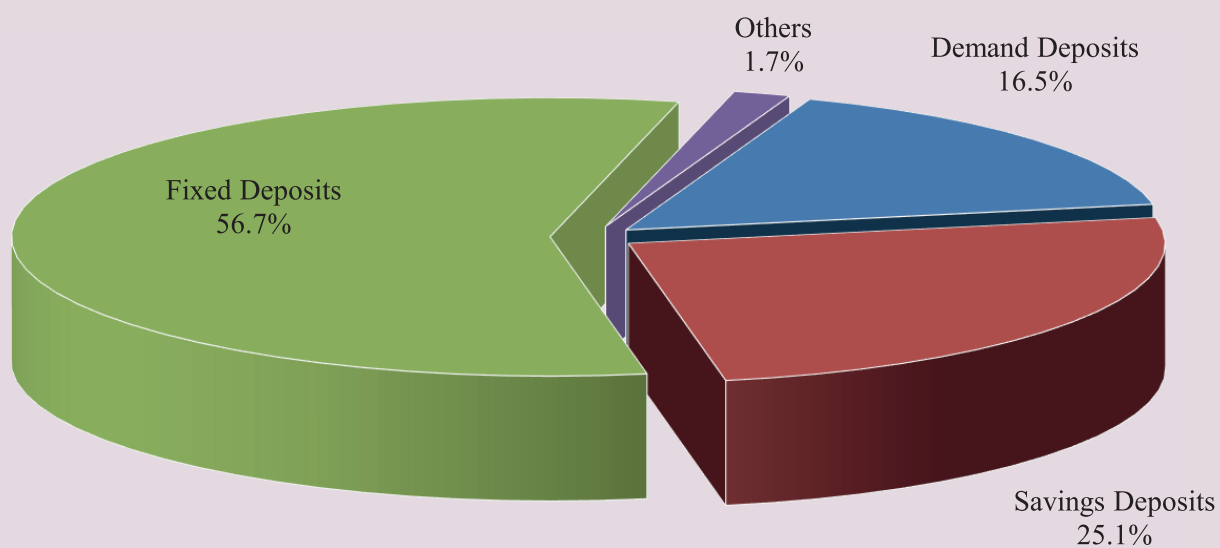


Table 20: Credit Granted by Micro-Finance Institutions*

Period	Numbers of				Loan Outstanding (In Billion KHR)	Interest Rate	
	District	Commune	Village	Household		Monthly	Annually
Dec-14	2,754	18,254	107,964	1,844,893	8,340	2% - 3%	27%-39%
Dec-15	4,576	27,510	141,514	2,149,180	12,365	2% - 4%	25%-41%
Dec-16	5,971	32,599	155,499	2,129,907	12,954	2% - 4%	25%-41%
2017*							
	Numbers of Branches			Number of Borrowers**	Loan Outstanding (In Billion KHR)	Interest Rate	
	Head Office	Province/ Krong	District/Khan			Monthly	Annually
Dec-17	76	366	975	1,776,467	17,236	1.4%-2.5%	16.9%-28.8%
Dec-18	80	399	944	1,872,916	21,813	1.2%-2.0%	15.1%-24.0%
Dec-19	82	406	965	2,109,170	29,357	1.1%-1.6%	13.4%-18.7%
Dec-20	79	343	749	1,919,926	27,527	1.1%-1.6%	13.4%-18.3%
Dec-21	77	325	664	1,897,878	31,723	1.1%-1.5%	13.3%-17.6%
2022							
Feb	78	329	662	1,923,101	33,213	1.1%-1.4%	12.8%-17.4%
Mar	79	324	665	1,942,327	33,851	1.1%-1.4%	12.9%-17.2%
Apr	81	326	668	1,960,196	34,333	1.1%-1.4%	12.9%-17.2%
May	84	334	671	1,983,181	34,976	1.1%-1.4%	13.0%-17.3%
Jun	85	336	671	2,027,069	35,730	1.1%-1.4%	12.9%-17.3%
Jul	85	337	672	2,046,509	36,477	1.1%-1.4%	13.1%-17.3%
Aug	85	339	678	2,070,163	37,189	1.1%-1.4%	13.2%-17.3%
Sep	85	340	678	2,093,002	37,725	1.1%-1.4%	13.0%-17.3%
Oct	86	340	678	2,111,552	38,374	1.1%-1.5%	13.1%-17.4%
Nov	86	340	678	2,121,312	38,761	1.1%-1.4%	13.0%-17.3%
Dec	86	343	679	2,129,150	38,932	1.1%-1.4%	13.0%-17.3%
2023							
Jan	87	342	676	2,138,432	39,335	1.1%-1.5%	13.1%-17.9%
Feb	87	342	676	2,149,437	39,255	1.0%-1.5%	12.1%-17.9%
Mar	87	346	678	2,164,707	39,684	1.0%-1.5%	12.1%-17.9%
Apr	87	346	683	2,169,008	40,068	1.0%-1.5%	12.1%-17.9%
May	87	358	674	2,179,962	40,022	1.0%-1.5%	11.6%-17.9%
Jun	87	362	672	2,185,693	40,198	1.0%-1.5%	11.5%-17.9%
Jul	87	362	671	2,188,142	40,269	0.9%-1.5%	10.2%-18.1%
Aug	87	359	652	2,163,738	40,710	0.8%-1.5%	10.2%-18.3%
Sep	86	310	517	1,625,506	21,240	1.0%-1.5%	12.2%-18.1%
Oct	87	309	518	1,627,775	21,299	1.0%-1.5%	12.1%-18.1%
Nov	87	308	517	1,626,914	21,182	1.0%-1.5%	12.1%-18.1%
Dec	87	310	515	1,620,818	21,036	1.0%-1.5%	12.1%-18.1%

* Including MFI and MDI

** Including Individuals and Legal Entities

*** Revised Data

Table 21: KHR-Denominated Checks Clearing through Clearing House

Date	Number of Cleared Check	Number of Working Day	Number of Cleared Check Per Day	Total Amount (In Billion KHR)	Daily Average Amount (In Billion KHR)	Returned Check	
						Number	Amount (In Billion KHR)
	1	2	3 = 1/2	4	5 = 4/2	6	7
Dec-16	3,938	22	179	490.0	22.3	13	3.15
Total	82,291	242	340	5,421.8	22.4	186	117.50
Dec-17	3,074	20	154	599.0	30.0	22	12.48
Total	37,485	239	1,885	6,607.8	27.6	138	28.51
Dec-18	2,994	19	158	935.1	49.2	16	6.58
Total	38,249	232	165	9,424.1	40.6	197	152.90
Dec-19	3,734	21	178	1,584.1	75.4	18	11.33
Total	41,696	236	177	13,602.7	57.6	206	630.84
Dec-20	3,264	23	142	1,839.6	80.0	5	0.57
Total	35,570	240	148	22,955.3	95.6	101	5,074.92
2021							
Dec	3,028	23	132	1,763.0	76.7	14	26.86
Total	31,749	242	131	19,089.4	78.9	99	466.43
2022							
Jan	2,611	20	131	1,592.1	79.6	8	4.19
Feb	2,695	20	135	1,441.0	72.0	7	3.93
Mar	2,970	22	135	1,760.9	80.0	7	4.08
Apr	2,637	19	139	1,567.7	82.5	4	0.73
May	2,908	21	138	1,605.0	76.4	5	59.83
Jun	2,813	22	128	1,770.1	80.5	6	0.39
Jul	2,726	21	130	1,448.2	69.0	5	0.30
Aug	2,996	23	130	1,758.5	76.5	3	0.13
Sep	2,654	21	126	1,421.7	67.7	6	12.03
Oct	2,771	21	132	1,776.9	84.6	7	1.48
Nov	2,721	19	143	1,791.4	94.3	2	0.03
Dec	3,106	22	141	1,898.0	86.3	8	1.79
Total	33,608	251	134	19,831.3	79.0	68	88.91
2023							
Jan	2,683	22	122	1,693.0	77.0	6	22.70
Feb	2,775	20	139	1,780.5	89.0	5	0.50
Mar	3,141	22	143	2,588.0	117.6	20	16.40
Apr	2,680	19	141	1,785.5	94.0	7	0.40
May	2,832	20	142	1,749.9	87.5	16	11.80
Jun	2,991	22	136	1,880.9	85.5	6	0.10
Jul	2,578	20	129	1,421.8	71.1	9	10.36
Aug	3,112	23	135	1,791.1	77.9	14	1.90
Sep	2,793	21	133	1,730.6	82.4	9	1.55
Oct	2,792	21	133	1,682.6	80.1	22	9.83
Nov	2,553	19	134	1,665.6	87.7	26	1.80
Dec	3,179	21	151	2,233.3	106.3	14	56.82
Total	34,109	250	136	22,002.8	88.0	154	134.16

Table 22: USD-Denominated Checks Clearing through Clearing House

Date	Number of Checks Cleared	Number of days Cleared	Number of Cleared Check per Day	Total Amount (In Million USD)	Daily Average Amount (In Million USD)	Returned Checks	
						Number	Amount (In Million USD)
	1	2	3 = 1/2	4	5 = 4/2	6	7
Dec-16	92,820	22	4,219	2,220.4	100.9	778	44.8
Total	1,025,209	242	4,236	21,790.4	90.0	8,738	439.6
Dec-17	101,093	20	5,055	2,824.6	141.2	789	37.6
Total	1,107,752	239	4,635	26,812.7	112.2	8,863	440.4
Dec-18	111,978	19	5,894	3,917.1	206.2	904	63.6
Total	1,238,232	232	5,337	41,462.7	178.7	10,474	2,686.1
Dec-19	121,353	21	5,779	4,448.5	211.8	964	87.1
Total	1,337,800	236	5,669	51,609.1	218.7	10,654	3,779.9
Dec-20	111,749	23	4,859	4,369.7	190.0	714	45.0
Total	1,200,110	240	5,000	50,220.0	209.3	8,620	8,737.8
Dec-21	104,666	23	4,551	5,002.1	217.5	672	65.5
Total	1,077,104	242	4,451	46,380.6	191.7	8,423	517.9
2022							
Jan	90,249	20	4,512	4,464.2	223.2	622	47.1
Feb	80,304	20	4,015	3,814.0	190.7	631	60.1
Mar	103,504	22	4,705	5,036.6	228.9	803	64.1
Apr	84,496	19	4,447	4,309.2	226.8	605	32.3
May	97,990	21	4,666	4,805.0	228.8	690	56.4
Jun	95,250	22	4,330	4,763.2	216.5	678	92.0
Jul	92,323	21	4,396	4,874.0	232.1	643	47.6
Aug	100,482	23	4,369	4,507.6	196.0	771	64.5
Sep	87,331	21	4,159	4,301.1	204.8	705	73.3
Oct	89,781	21	4,275	5,054.4	240.7	779	1,076.3
Nov	86,441	19	4,550	3,771.7	198.5	864	71.5
Dec	97,561	22	4,435	4,152.9	188.8	948	78.7
Total	1,105,712	251	4,405	53,853.9	214.6	8,739	1,764.0
2023							
Jan	85,292	22	3,877	3,749.7	170.4	886	103.8
Feb	81,623	20	4,081	3,644.1	182.2	941	83.9
Mar	97,101	22	4,414	4,207.1	191.2	1,045	79.3
Apr	78,164	19	4,114	3,471.0	182.7	861	66.2
May	94,501	20	4,725	3,836.8	191.8	1,054	86.9
Jun	89,627	22	4,074	3,911.5	177.8	958	78.2
Jul	84,307	20	4,215	3,600.8	180.0	1,018	62.8
Aug	91,909	23	3,996	3,755.6	163.3	1,059	74.0
Sep	83,733	21	3,987	3,399.1	161.9	963	52.6
Oct	84,135	21	4,006	3,327.6	158.5	920	55.9
Nov	80,278	19	4,225	3,245.3	170.8	935	78.6
Dec	91,040	21	4,335	4,284.5	204.0	957	58.5
Total	1,041,710	250	4,167	44,433.1	177.7	11,597	880.6

Table 23: Visitor Arrivals in Cambodia

	2023			% of Total		% Change	
	Oct	Nov	Dec	Nov	Dec	Nov/Oct	Dec/Nov
(Mode of Arrival)							
Phnom Penh International Airport	114,541	120,327	131,985	23.6	24.6	5.1	9.7
Kong Keng International Airport	909	1,499	1,344	0.3	0.3	64.9	-10.3
Siem Reap International Airport	39,388	55,757	59,779	10.9	11.2	41.6	7.2
Land	321,091	320,237	334,262	62.8	62.4	-0.3	4.4
Boat	4,401	12,411	8,418	2.4	1.6	182.0	-32.2
Preah Vihea	0	0	0	0.0	0.0	0.0	0.0
Total	480,330	510,231	535,788	100.0	100.0	6.2	5.0
(Arrival by Purpose of Visit)							
Tourist	381,595	413,872	436,636	81.1	81.5	8.5	5.5
Business and Professional	90,160	84,135	83,145	16.5	15.5	-6.7	-1.2
Others and not specified	8,575	12,224	16,007	2.4	3.0	42.6	30.9
Total	480,330	510,231	535,788	100.0	100.0	6.2	5.0
(Top-Ten Countries of Passenger Arrivals)							
Thailand	163,569	154,950	162,401	30.4	30.3	-5.3	4.8
Vietnam	95,895	94,123	99,719	18.4	18.6	-1.8	5.9
China (PRC)	48,048	44,688	49,548	8.8	9.2	-7.0	10.9
Lao PDR	41,887	37,179	41,561	7.3	7.8	-11.2	11.8
United States of America	13,386	21,396	21,020	4.2	3.9	59.8	-1.8
South Korea	12,922	13,655	17,862	2.7	3.3	5.7	30.8
France	7,661	13,185	12,147	2.6	2.3	72.1	-7.9
Australia	7,146	9,028	11,639	1.8	2.2	26.3	28.9
Indonesia	11,058	11,805	11,149	2.3	2.1	6.8	-5.6
Japan	6,458	9,377	10,726	1.8	2.0	45.2	14.4
Others	72,300	100,845	98,016	19.8	18.3	39.5	-2.8
Total	480,330	510,231	535,788	100.0	100.0	6.2	5.0

Source: Ministry of Tourism

** Increased in times, not in percentage (%).*

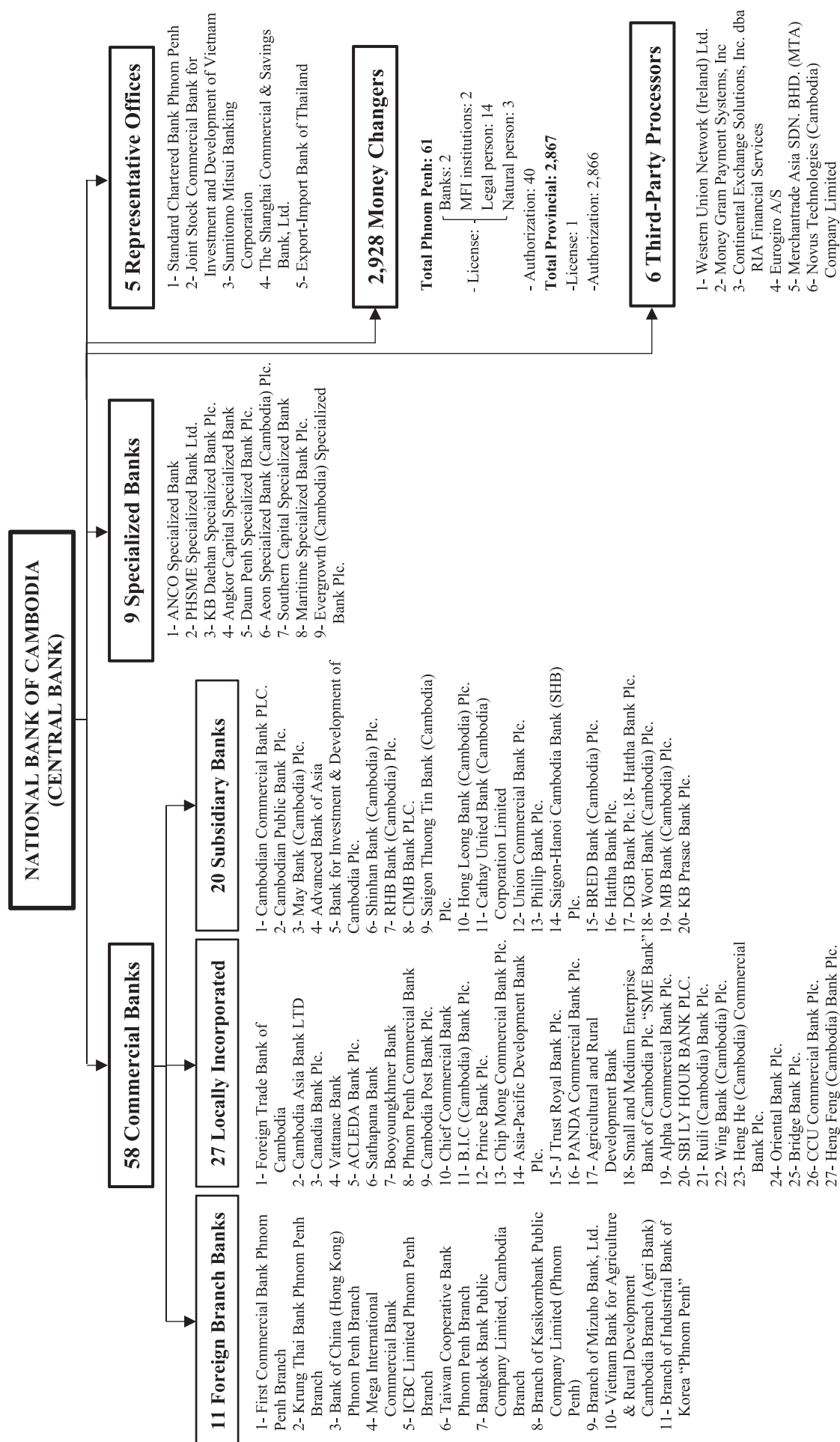
Table 24: Cambodia's Imports and Exports

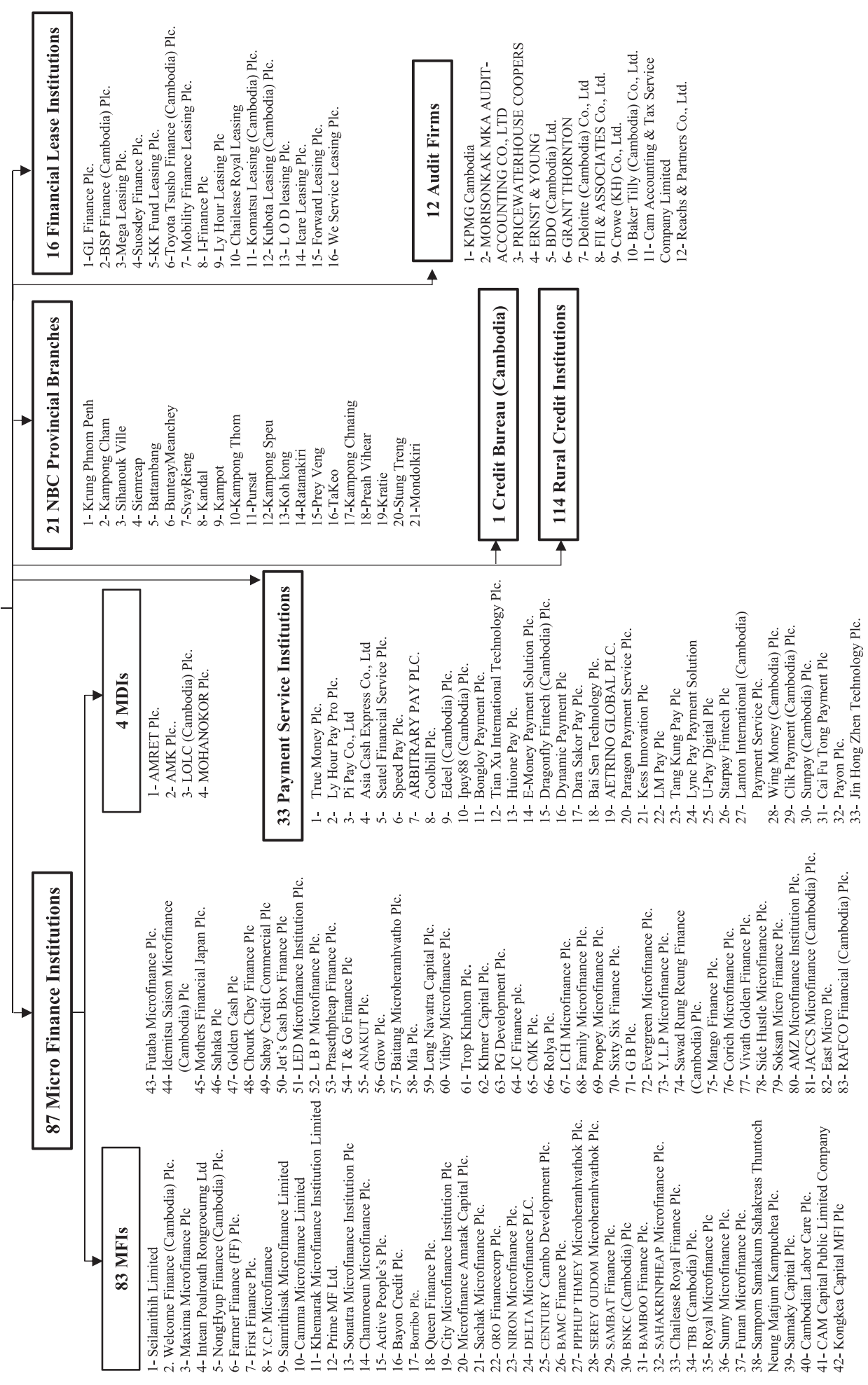
(In Billion KHR)

	2023			Change in Billion KHR		Change in %	
	Oct	Nov	Dec	Nov/Oct	Dec/Nov	Nov/Oct	Dec/Nov
Imports by Commodity							
Medicine	86.9	92.1	137.9	5.2	45.8	6.0	49.8
Cigarette	71.7	121.4	108.9	49.8	-12.5	69.5	-10.3
Food and Beverage	362.8	397.1	433.0	34.4	35.8	9.5	9.0
Equipment Construction	278.8	348.6	327.2	69.8	-21.4	25.0	-6.1
Cement	4.9	5.8	5.8	0.9	0.0	18.1	0.6
Steel	105.1	112.3	161.2	7.2	48.9	6.9	43.5
Phones	8.8	3.4	8.9	-5.4	5.5	-61.1	161.6
T.V	0.6	0.9	2.1	0.3	1.2	50.7	136.3
Other Electronic Equipment	76.7	103.0	140.0	26.3	36.9	34.3	35.9
Garment	173.2	182.6	195.5	9.4	12.9	5.4	7.1
Fabric	1,507.7	1,547.2	1,615.8	39.5	68.6	2.6	4.4
Vehicle	318.8	340.5	288.6	21.7	-52.0	6.8	-15.3
Equipment of Cold	15.1	15.5	27.1	0.4	11.6	2.7	75.1
Gold	669.4	0.0	27.8	-669.4	27.8	4.0	5.0
Oil	952.2	1,101.3	1,269.9	149.1	168.5	15.7	15.3
Fertilizer	113.6	96.6	139.1	-17.0	42.4	-14.9	43.9
Others	3,601.0	3,494.5	4,086.5	-106.4	592.0	-3.0	16.9
Total Imports	8,347.2	7,963.0	8,975.2	-384.2	1,012.2	-4.6	12.7
Exports by Commodity							
Garment	2,230.9	2,623.1	3,131.8	392.2	508.8	17.6	19.4
Footwear	402.4	513.5	622.8	111.1	109.3	27.6	21.3
Other Textile Product	601.6	664.3	825.5	62.8	161.2	10.4	24.3
Electrical Part	872.5	804.4	607.2	-68.0	-197.2	-7.8	-24.5
Vehicle and Bicycle Part	90.8	94.9	93.2	4.1	-1.7	4.5	-1.8
Bicycle	101.7	78.6	88.3	-23.1	9.6	-22.7	12.3
Wood Products	165.6	157.2	182.1	-8.4	24.9	-5.1	15.8
Rice	207.7	178.5	188.6	-29.2	10.1	-14.1	5.7
Rubber	225.0	263.4	312.0	38.3	48.6	17.0	18.5
Fish and Other Agricultural Products	649.2	1,188.8	1,212.3	539.6	23.5	83.1	2.0
Others	1,645.1	1,487.1	1,679.4	-158.0	192.3	-9.6	12.9
Total Exports	7,192.4	8,053.7	8,943.1	861.4	889.4	12.0	11.0

*Source: General Department of Cambodia Customs and Excise*** Increased in times, not in percentage (%).**** Revised Data*

Table 25: THE BANKING SYSTEM IN CAMBODIA
As of 31 December 2023





អ៊ីនធឺណែត
INTERNET

: www.nbc.gov.kh គឺជាគេហទំព័ររបស់ធនាគារជាតិនៃកម្ពុជា។ ទិន្នន័យថ្មីៗក្នុងគេហទំព័រ និង ទិន្នន័យបន្តបន្ទាប់ទៀត ត្រូវបាននិងកំពុងដាក់បញ្ចូលទៅក្នុងប្រព័ន្ធទិន្នន័យ តាមធនធានដែលមាន។ លើសពីនេះទៀត គេហទំព័រនេះ គឺជាទីតាំងដ៏ល្អបំផុតដើម្បីទទួលបានទិន្នន័យសង្ខេបនៃការចេញផ្សាយចុងក្រោយបង្អស់។

www.nbc.gov.kh is the National Bank of Cambodia website. The website new data and metadata are progressively being added to the database, as resources permit. This website is the best place to start for access to summary data from the latest publications.

សេវាព័ត៌មាន
INFORMATION SERVICE

: បុគ្គលិករបស់នាយកដ្ឋានស្ថិតិ នៃធនាគារជាតិនៃកម្ពុជា អាចជួយចង្អុលបង្ហាញ ឬណែនាំអ្នកប្រើប្រាស់ក្នុងការស្វែងរកទិន្នន័យតាមតម្រូវការ។ ការបោះពុម្ពផ្សាយរបស់ធនាគារជាតិនៃកម្ពុជា អាចរកជាប់បាន ហើយសេវាលើការជាប់ប្រចាំអាចរៀបចំបានដែរ។ ចំពោះសេវាលើទិន្នន័យពិសេសផ្សេងទៀតក៏អាចរកបានផងដែរ តាមរយៈការមកជាប់ព្រឹត្តិបត្រដោយផ្ទាល់។

The Statistics Department staff of the National Bank of Cambodia can assist users in addressing their data requirements. The National Bank of Cambodia publications are available for sale and subscription services can be arranged. Other special data services are also available, on a user pays basis.

អាសយដ្ឋានទំនាក់ទំនង
CONTACT DETAILS

ធនាគារជាតិនៃកម្ពុជា

NATIONAL BANK OF CAMBODIA

នាយកដ្ឋានស្ថិតិ

Statistics Department

អគារលេខ ៦៩-៧០ មហាវិថីហាណូយ (លេខ១០១៩) ភូមិបាយ៉ាប សង្កាត់ភ្នំពេញថ្មី

ខណ្ឌសែនសុខ រាជធានីភ្នំពេញ

#69-70, Hanoi Blvd. (1019), Phum Bayab, Sangkat Phnom Penh Thmei,

Khan Sen Sok, Phnom Penh

អ៊ីម៉ែល : statistics@nbc.gov.kh

E-mail : statistics@nbc.gov.kh

ទូរស័ព្ទ : (៨៥៥) ២៣ ៧២២ ៥៦៣ – ១១១៥

Telephone : (855) 23 722 563 – 1115

ទូរសារ : (៨៥៥) ២៣ ៤២៦ ១១៧

Facsimile : (855) 23 426 117



ISSN 2074-5680

ផលិតដោយ ធនាគារជាតិនៃកម្ពុជា

Produced by the National Bank of Cambodia